



and Friends

Sharing
the **HERD**
GENETICS SALE

Wednesday
DECEMBER 8, 2021-6:30 PM
LEGACY INN GRENFELL, SASKATCHEWAN
2:00PM VIEWING | 5:30PM SUPPER | 6:30PM SALE

Opening the vault on some great genetics

WELCOME FROM DOUBLE BAR D...

*W*elcome! Well it is hard to believe that another year has passed and we are now into the fall cattle swing of things. We feel very blessed with the many repeat customers we have year after year.. ThankYou!

I want to thank everyone for their prayers and support as I battled illness this spring. Above all, our praise and thanks goes to the Lord who pulled me through and sustained my family during a very scary time. A huge thanks to all my family and employees who helped out in my absence and allowed me to rest and recover. God Bless you all richly!

Faith ~ Family ~ Friends ~ and Cattle!

This edition of Share the Herd Genetics sale we feel very confident in and are proud to offer our very best in live lots and frozen genetics. I guess this has been 50 years in the making so take advantage of this elite set of genetics. We definitely strive to source and breed the best cattle to our ability.

We are very pleased to be working with friends as consignors: Longview Cattle Co of Grenfell, Horner Cattle Co of Minnedosa Mb, Bouchard Livestock International and Canadian Donors. Your input and cooperation is appreciated. Also a big shout of thanks to T Bar C Cattle Co for their assistance in marketing and managing this sale.

We are very excited to offer some very special open Wheatland Man O War heifer calves. This is the anticipated result of the investment of this special bull. Don't miss out on purchasing one of these leading ladies. (Keep an eye out for his sons in March 2022).

The remainder, opens and breeds in all categories - Fleckvieh, Reds and Blacks, are the cream of the crop and will be a welcome addition to your herds.

This year the frozen genetics are very current and highly sought after. Enjoy the evening and invest in these genetics.

Thanks so much to our past, present and future customers. Your interest and confidence in our program is greatly appreciated.

Join us Wednesday, December 8 at the Legacy Inn Grenfell. If you cannot make it please join us online through DLMS (Thanks Mark!)

Please don't hesitate to call Logan or I, we look forward to your inquiries.

Best Regards,

Ken

Ken Dimler 306.697.7204
Logan Dimler 306.451.7229
Richard Dimler 306.697.7298



Ken and Shauna Dimler
Logan, Aynslee, Jenson and Atlee Dimler



Richard and Marcia Dimler



Mark, Julie, Justin and Nathan Dimler

DOUBLE BAR D FARMS

Box 580, Grenfell, SK S0G 2B0

Ken Dimler: 306.697.7204 kenshou@yourlink.ca
www.doublebardfarms.com

DOUBLE BAR D & FRIENDS SHARING THE HERD GENETICS SALE

SALE DAY INFORMATION

AUCTIONEER:

Chris Poley 306-220-5006

SALES STAFF:

Shane Michelson 403-363-9973
Ben Wright 519-374-3335

DOUBLE BAR D/GUEST CONSIGNOR PHONES:

Ken Dimler 306-697-7204
Logan Dimler 306-451-7229
Shar Kaczmar 306-451-7686
Rayel Kaczmar 306-451-0075
Laura Horner 204-868-5335
Jake Rawluk 204-768-0284
Brian Bouchard 403-813-7999
Scott Bohrson 403-370-3010

SALES MANAGEMENT:

T Bar C Cattle Co. Ltd. 306-933-4200
Chris Poley 306-220-5006
Shane Michelson 403-363-9973
Ben Wright 519-374-3335
Chad Wilson 306-577-1256
Levi Rimke 204-851-4515

MARKETING AGENTS:

First Class Marketing

Jon Karsin 204-870-0329
Darnell Fornwald 403-795-8030

Bohrson Marketing Services

Scott Bohrson 403-370-3010
Rob Voice 306-270-6082
Jay Sibbald 403-899-2625
Cody Haney 403-845-8806

AGENDA:

Wednesday, December 8, 2021

2:00 PM View the sale cattle at Double Bar D Farms

5:30 PM Supper at the Legacy Inn

6:30 PM Double Bar D "Sharing The Herd" Fall Female Sale

SALE ACCOMMODATIONS:

Legacy Inn

800 Ennis Ave. Grenfell SK, S0G 2B0

1-639-683-0107 | gmgrenfell@bluecrescent.ca

Call Legacy Inn and ask for rooms reserved for sale

FINANCING TERMS:

Terms are available on the females selling OAC and upon completion of a financial contract. Please contact Richard Dimler or Chris Poley for more details and pre-approval.

SALE DAY INSURANCE:

Alameda Agencies

306-489-2258 or 306-483-7311

Bonnie Thompson

CATALOGUE PRODUCTION by Today's Publishing Inc.

PHOTOGRAPHY:

Prairie Pistol Designs - Melissa McRae

VIDEOS & ONLINE BIDDING:



VIEW THE CATALOGUE AND VIDEOS ONLINE

WWW.BUYAGRO.COM

VIDEOS OF EVERY LOT ARE AVAILABLE ON OUR WEBSITE...

WWW.DOUBLEBARDFARMS.COM

FROM THE DESK AT T BAR...

Welcome to "Sharing the Herd" genetics sale, Wednesday, December 8th, 6:30 P.M. at the Legacy Inn, Grenfell, Saskatchewan. Your hosts, the Dimler Family at Double Bar D, again have opened their vault to share the elite genetic lineup which has been nearly a half century in the making. In addition, they have asked several prominent breeders and friends to share their unique offering making this event dynamic and power packed. Double Bar D are no strangers to this great breed as they have been suppliers of sires for both the purebred and commercial industry each spring. This great breeding program is built with a forward-thinking attitude as each year they source and acquire the finest new sires in the breed. No doubt, the first progeny of "Man O War" will be headliners... fancy, fresh and futuristic along with a competitive nature. The bred females are complete with earning power and sourced out of the best cow families whether they come out of the donor pen or the pasture. Their exciting services are only a month or so away from clipping a coupon no matter what sex the resulting calf will be. The frozen genetics are a combination of proven, prolific donors mated to the industry leaders... they have taken the guesswork out so that buyers can be assured of value-added genetic packages. What a great opportunity to do some tax planning while sourcing the best Simmental genetics available... whether you are looking for Blacks, Reds or Flecks! Feel free to stop by the ranch any time prior the sale and preview this outstanding offering. Ken or Logan will be pleased to give you a tour or give them a call to discuss the opportunities available for your program. Plan to be a part of history as "Share the Herd" at Double Bar D whether it be with us in person, online or on the phone. During these times, feel free to give any of the T Bar C Team a call and we will be pleased to assist you in a professional and confidential manner with your selections.

Chris Poley



T BAR C CATTLE CO. LTD.
Box 2330, Warman, SK S0K 4S0
O: 306.933.4200 | F: 306.934.0744
info@tbarc.com | www.tbarc.com



Chris Poley
306.220.5006



Shane Michelson
403.363.9973



BenWright
519.374.3335

First Man O' War Females to sell!



RLD

417J

CHOICE LOT **1A** Polled Homo Black **DOUBLE BAR D *Bette* 417J**

• PUREBRED • POLLED • RLD 417J • BPTG1348109 • JANUARY 8, 2021 • BW: 86 LBS.

CCLT ALLIANCE 91C
WHEATLAND MAN O' WAR 907G
WHEATLAND LADY 519C

W/C BANKROLL 811D
DOUBLE BAR D BETTE 477F
DOUBLE BAR D BETTE 417A

WS PILGRIM H182U
BROOKS SHINIA 1A
YARDLEY LAD A440
WHEATLAND LADY 321A
W/C LOADED UP 1119Y
MISS WERNING KP 8543U
DOUBLE BAR D TRUE GRIT
DOUBLE BAR D BETTE 190W

	CE	BW	WW	YW	MILK	MCE	MWWT
EPDS	9.3	4.3	88.2	121.3	25.3	3.7	69.4

Second year in a row that 477F influence has led off the Sharing the Herd Genetics Sale. Both of these Bette females are full sibs of the 2019 high selling 477F female going to Wheatland Simmental and Kaden Michelson for \$45,000.00 and the first offering of the record breaking Wheatland Man O War. 417J and 443J are outstanding females with subtle differences. 443J exudes extreme capacity and softness while 417F has extra extension, length and elegance. Double Bar D is ecstatic to retain either of these great quality females!



Double Bar D Bette 477F - Dam

First Man O' War Females to sell!



RLD

443J

CHOICE LOT

LOT Polled Homo Black

1B

DOUBLE BAR D *Bette* 443J

• PUREBRED • POLLED • RLD 443J • BPTG 1348289 • JANUARY 16, 2021 • BW: 78 LBS.

CCLT ALLIANCE 91C
WHEATLAND MAN O' WAR 907G
 WHEATLAND LADY 519C

W/C BANKROLL 811D
DOUBLE BAR D BETTE 477F
 DOUBLE BAR D BETTE 417A

WS PILGRIM H182U
 BROOKS SHINIA 1A
 YARDLEY LAD A440
 WHEATLAND LADY 321A
 W/C LOADED UP 1119Y
 MISS WERNING KP 8543U
 DOUBLE BAR D TRUE GRIT
 DOUBLE BAR D BETTE 190W

	CE	BW	WW	YW	MILK	MCE	MWWT
EPDS	9.7	4.0	88.1	127.0	25.3	3.8	69.4



Wheatland Man O' War 907G - Sire



RLD
468J

LOT
2

DOUBLE BAR D *Brett* 468J

• PUREBRED • POLLED • RLD 468J • BPTG1358593 • JANUARY 20, 2021 • BW: 84 LBS.

CCLT ALLIANCE 91C
WHEATLAND MAN O' WAR 907G
WHEATLAND LADY 519C

W/C BANKROLL 811D
DOUBLE BAR D BRETT 536F
DOUBLE BAR D BRETT 454B

WS PILGRIM H182U
BROOKS SHINIA 1A
YARDLEY LAD A440
WHEATLAND LADY 321A
W/C LOADED UP 1119Y
MISS WERNING KP 8543U
JF AMERICAN PRIDE 0987X
DOUBLE BAR D BRETT 161U

Homo Polled Hetro Black

Here's a showstopper Man O War daughter out of the 'back to back' Manitoba Ag Ex division Champion, Brett 536F. 468J has all the credentials out of the impressive Brett 536F Bankroll daughter x Wheatland Man O War. We feel 468J has a very bright future as a definite herd improver, she possesses great dimension on a good structure while maintaining excellent eye appeal. Don't miss out on this opportunity to invest in the "Brett" Cow Family with the added excitement of the inaugural Man O War offering.

	CE	BW	WW	YW	MILK	MCE	MWWT
EPDS	10.1	4.5	85.7	120.5	21.1	4.4	64.0



RLD 536F - Dam



RLD 454B - Granddam



Man O' War 907G - Sire



LOT
3

DOUBLE BAR D *Chanelle* **412J**

• PUREBRED • POLLED • RLD 412J • BPG1348099 • JANUARY 7, 2021 • BW: 80 LBS.

- CCLT ALLIANCE 91C
- WHEATLAND MAN O' WAR 907G
- WHEATLAND LADY 519C
- HARVIE MOONSHINE 32Z
- SILVERLAKE CHANELLE 8C
- SWAN LAKE EXTRA STYLE 3 A
- WS PILGRIM H182U
- BROOKS SHINIA 1A
- YARDLEY LAD A440
- WHEATLAND LADY 321A
- HARVIE JDF WALLBANGER111X
- HARVIE MS TRUFFLE 35X
- LFE BLACK LAKOTA 385W
- CROSSROAD XTRA STYLE 176X

	CE	BW	WW	YW	MILK	MCE	MWWT
EPDS	6.1	3.9	86.1	124.2	24.1	-0.7	67.2

Homo Polled Homo Black

Chanelle 412J is a very attractive blaze faced Wheatland Man O War daughter going back to an outstanding power black cow we purchased from Silver Lake Simmental from Shades. 412J has awesome rib dimension, length with great extension. A real beautiful power type. A female with an excellent future.

LOT
4

DOUBLE BAR D *Sasha* **429J**

• PUREBRED • POLLED • RLD 429J • BPG1366410 • JANUARY 12, 2021 • BW: 80 LBS.

- WBF SIGNIFICANT B132
- RUBYS TURNPIKE 771E
- RUBYS MISS CLEO 240Z
- WLB OBSIDIAN BLACK 391Y
- DOUBLE BAR D SASHA 703D
- DOUBLE BAR SASHA 75Y
- GW-WBF SUBSTANCE 820Y
- WBF HEBE X376
- OVAL F RINGLEADER R579
- RUBYS MISS CLEO 964W
- HART GOOD TIME W223
- WLB 462P LUCY 400W
- TNT TANKER U263
- SLF MISS SWAN 49U

	CE	BW	WW	YW	MILK	MCE	MWWT
EPDS	8.7	3.1	89.5	144.5	24.7	5.6	69.5

Homo Polled Homo Black

Sasha is a powerful female with great growth and dimension yet puts it all together very impressively on a correct structure. This Swan Lake Sasha cow family has been very consistent with all the progeny being a cut above.





SRK
53J

LOT
5

LONGVIEW *Georgia* 53J

• PUREBRED • POLLED • SRK 53J • BPG1359466 • FEBRUARY 25, 2021 • BW: 95 LBS.

CCLT ALLIANCE 91C
WHEATLAND MAN O' WAR 907G
WHEATLAND LADY 519C

W/C BANKROLL 811D
DOUBLE BAR D GEORGIA 412F
CVLS MS GEORGIA 565R

WS PILGRIM H182U
BROOKS SHINIA 1A
YARDLEY LAD A440
WHEATLAND LADY 321A
W/C LOADED UP 1119Y
MISS WERNING KP 8543U
SS GOLD MINE L42
LUCAS SAVANNAH 14K

	CE	BW	WW	YW	MILK	MCE	MWWT
EPDS	8.9	3.2	77.4	103.4	26.5	3.7	65.2

Homo Polled Homo Black

Here's an easy fleshing female with loads of power. Huge bodied packed with loads of spring to her rib, and she gets around on a great set of feet and hind legs. Her dam Georgia 412F was the high seller in the 2019 Share the Herd sale. Consigned by Longview Cattle Company



Georgia 412F - Dam



Ms Georgia 565R - Grand Dam

LOT
6

LONGVIEW *Pepsi* 28J

• PUREBRED • POLLED • SRK 28J • BPG1359441 • FEBRUARY 8, 2021 • BW: 90 LBS.

CCLT ALLIANCE 91C
WHEATLAND MAN O' WAR 907G
WHEATLAND LADY 519C

KWA LAW MAKER 59C
DOUBLE BAR D PEPSI 436E
SWAN LAKE PEPSI 97A

WS PILGRIM H182U
BROOKS SHINIA 1A
YARDLEY LAD A440
WHEATLAND LADY 321A
CDI AUTHORITY 77X
KWA MS ROCK 14X
REMINGTON LOCK N LOAD 54U
MRL MISS 390X

	CE	BW	WW	YW	MILK	MCE	MWWT
EPDS	7.6	2.7	77.9	111.8	25.9	2.1	64.9

Homo Polled Hetero Black

This heifer has cow power written all over her. She has extra substance and mass while still being feminine and attractive. Her dam Pepsi 436E was the high selling female in Share the Herd 2018. Consigned by Longview Cattle Company



SRK
28J



Pepsi 436E - Dam



Swan Lake Pepsi 97A - Grand Dam



RLD
475J

LOT
7

DOUBLE BAR D *Pepsi* 475J

• PUREBRED • POLLED • RLD 475J • BPG1364453 • JANUARY 21, 2021 • BW: 80 LBS.

W/C RELENTLESS 32C
W/C RELENTLESS 007G
W/C RJ MISS DERBY GIRL

REMINGTON LOCK N LOAD 54U
SWAN LAKE PEPSI 97A
MRL MISS 390X

YARDLEY UTAH Y361
MISS WERNING KP 8543U
YARDLEY HIGH REGARD W242
MISS WERNING KP 8543U
KN REMINGTON ON TARGET 2S
BAR 15 MISS KNIGHT78E-51G
TNT POWER SURGE T404
MRL MISS 332T

	CE	BW	WW	YW	MILK	MCE	MWWT
EPDS	8.2	3.5	79.2	113.7	22.6	2.3	62.2

Polled Homo Black

Swan Lake Pepsi 97A has done it again! She simply never misses, with many progeny in the industry, too numerous to mention and many still here at DBD working extremely well. 475J is a very hard female to part with in this edition of Share the Herd. We purchased W/C Relentless 007G from Wernings in their 2020 Production Sale. We felt that Relentless 007G was their best on offer and wanted the Relentless influence and predictability of superior female production. 475J is a Superior female on a flawless structure

Double Bar D reserves the right to flush 475J in the future at the buyers convenience and sellers expense.



W/C Relentless 007G - Sire



Swan Lake Pepsi 97A - Dam



RLD
422J

LOT
8

DOUBLE BAR D *Pearl* 422J

• PUREBRED • POLLED • RLD 422J • BPG1348118 • JANUARY 10, 2021 • BW: 70 LBS.

W/C NIGHT WATCH 84E
RUST PRIMETIME 507G
HARRELL ANGEL 5870C

WFL ABSOLUTE 51Y
HFL PEARL 917G
DOUBLE BAR D PEARL 485E

CCR ANCHOR 9071B
MISS WERNING KP 8543U
YARDLEY HIGH REGARD W242
W/C MISS ANGEL 2870Z
LFE STRAIT UP 454W
WFL MS BLACK FLASH 8068U
SWAN LAKE BIG RED 85 B
DOUBLE BAR D PEARL 471B

	CE	BW	WW	YW	MILK	MCE	MWWT
EPDS	13.5	0.0	73.1	111.4	22.5	5.3	59.1

Homo Polled Hetro Black

The first and only Primetime female on offer for this year. Once I laid my eyes on Primetime at Rust Mountainview Bull sale in 2020 I knew we had to own him. Touted as a very special bull calf and favourite of many at Denver 2020, he has only continued to develop into a very impressive individual. He is heifer approved but so much more with his upcoming bull calf crop doing very well. Pearl 422J is a very complete and soft made Primetime daughter with extra rib shape and width. Dam of pearl, HFL Pearl 917G was purchased from Horner Cattle Co in the fall of 2019 from "Shades" and has developed into a good Absolute daughter.



WAGR Melodys Currency 9402G - Sire



Rust Primetime 507G - Sire

LOT
9

DOUBLE BAR D *Lady* 610J

• PUREBRED • POLLED • RLD 610J • BPG1366412 • MARCH 21, 2021 • BW: 90 LBS.

RUBYS CURRENCY 7134E
WAGR MELODYS CURRENCY 9402G ET
3C MELODY M668 BZ

SVS CAPTAIN MORGAN 11Z
DOUBLE BAR D LADY 755B
WHEATLAND LADY 822U

WBF SIGNIFICANT B132
RUBYS JILL 035X
HART SUBZERO G322
3C CROCUS G374 BZ
HARVIE JDF WALLBANGER111X
SUNNYVALLEY BLK JENNA 88U
WHEATLAND BULL 680S
WHEATLAND LADY 638 S

	CE	BW	WW	YW	MILK	MCE	MWWT
EPDS	6.8	3.4	77.6	124.3	24.9	2.8	63.7

Homo Polled Hetro Black

A very young, end of March, born Wagr Melody's Currency 9402G daughter that is the only one on offer in his inaugural year. We purchased Currency on the sheer power and predictability of his genetic combination, Currency X 3C Melody.

610J has all the guesswork removed with 3C Melody, Captain Morgan and Wheatland Lady 822U to back her up.



RLD
610J

LOT
10

DOUBLE BAR D *Timeless* 414J

• PUREBRED • POLLED • RLD 414J • PG1348101 • JANUARY 7, 2021 • BW: 80 LBS.

WHEATLAND KILL SWITCH
JPC **IGNITION 166F**
SPRINGCREEK JAYCEE 53W

KWA BIG TIME 86A
KWA MS BIG TIME 49D
KWA MS SF 119W

WHEATLAND CIRCUIT BREAKER
HR/RR MS CANDACE T73
RCC/TCF LINE DRIVE M181
MJ BLACK JUST CAUSE 204P
MRL INTEGRITY 76Y
DOUBLE BAR D PIXIE 75T
MUIRHEAD STEVE FRENCH
KWA MS DYNAMITE 89R

	CE	BW	WW	YW	MILK	MCE	MWWT
EPDS	8.9	2.7	71.3	102.8	27.1	6.1	62.8

Polled

Timeless 414J is a real powerful daughter of JPC Ignition that exhibits extra dimension, length and performance, all while moving along freely on a correct and sturdy structure. 414J dam was purchased from Ashworths and has developed into a great cow.



RLD
414J



JPC Ignition 166F - Sire



RLD
452J



FELT Last Call 304F- Sire

LOT
11

DOUBLE BAR D *Snapper* 452J

• PUREBRED • POLLED • RLD 452J • PG1364446 • JANUARY 16, 2021 • BW: 82 LBS.

W/C BANKROLL 811D
FELT **LAST CALL 304F**
FELT SADIE 304C

LBR RED CEDAR Y708
DOUBLE BAR D **SNAPPER 650B**
TPP CROCUS MS SNAPPER 2S

W/C LOADED UP 1119Y
MISS WERNING KP 8543U
YARDLEY HIGH REGARD W242
KAPPES SADIE M166
LBR ROYAL DESTINY T27
LBR TANA T708
BF K030 RED SNAPPER
TPP CROCUS PAIGE 14P

	CE	BW	WW	YW	MILK	MCE	MWWT
EPDS	7.4	3.7	76.4	110.9	31.4	4.6	69.6

Polled

A very correct and well balanced Last Call daughter that has tremendous extension, eye appeal and volume.



RLD
489J



Big Red 822F- Maternal Brother

LOT
12

DOUBLE BAR D *Lady* 489J

• PUREBRED • POLLED • RLD 489J • PT61349142 • JANUARY 23, 2021 • BW: 78 LBS.

W/C BANKROLL 811D
FELT **LAST CALL 304F**
FELT SADIE 304C

DOUBLE BAR D **GUNNER 123U**
DOUBLE BAR D **LADY 113X**
ACS RED LADY HAAS 826U

W/C LOADED UP 1119Y
MISS WERNING KP 8543U
YARDLEY HIGH REGARD W242
KAPPES SADIE M166
TNT ACCELERATOR S226
LORNA'S BLACK MARINA 110M
WHEATLAND RED TEDDY 457P
HAAS RANCH G217

	CE	BW	WW	YW	MILK	MCE	MWWT
EPDS	7.8	2.1	68.7	96.7	27.7	5.4	62.1

Homo Polled

A real honest Last Call daughter that is extremely hairy and mellow made. Her dam is very consistent with a son selling to Robb Farms for 42500 in our Best of Both Worlds 2020 Sale



RLD
605H

LOT
13A

DOUBLE BAR D *Bianca* 605H

CHOICE LOT

• PUREBRED • POLLED • RLD 605H • BPTG1321195 • MARCH 4, 2020 • BW: 82 LBS.

- WBF SIGNIFICANT B132
- RUBYS TURNPIKE 771E
- RUBYS MISS CLEO 240Z
- W/C BANKROLL 811D
- DOUBLE BAR D BETTE 477F
- DOUBLE BAR D BETTE 417A
- GW-WBF SUBSTANCE 820Y
- WBF HEBE X376
- OVAL F RINGLEADER R579
- RUBYS MISS CLEO 964W
- W/C LOADED UP 1119Y
- MISS WERNING KP 8543U
- DOUBLE BAR D TRUE GRIT
- DOUBLE BAR D BETTE 190W

Homo Polled Hetro Black

The \$45000 Bette 477F continues to raise the right kind of quality cattle. These two outstanding daughters of Turnpike are definitely a cut above and exude the awesome qualities of this powerful cow family. Tremendous heart girth, forerib, hip and flank all while being supported on a sturdy and correct frame. You choose 605H or 603H and DBD is very pleased to retain the remaining heifer. Mating to Man O War and Primetime will be powerful and very marketable.

RLD 605H AI'd to Wheatland Man O' War 907G, April 11, 2021
Exposed to RUST Primetime 507G, April 23, 2021.
Preg Checked Safe to AI date.

	CE	BW	WW	YW	MILK	MCE	MWWT
EPDS	10.7	3.4	91.1	145.5	25.4	5.4	70.9



Double Bar D Bette 477F - Dam Lot 13A and 13B



RLD
603H

LOT
13B **DOUBLE BAR D** *Ember* **603H**

• PUREBRED • POLLED • RLD 603 • BPTG1321194 • MARCH 3, 2020 • BW: 80 LBS.

WBF SIGNIFICANT B132
RUBYS TURNPIKE 771E
RUBYS MISS CLEO 240Z

W/C BANKROLL 811D
DOUBLE BAR D BETTE 477F
DOUBLE BAR D BETTE 417A

GW-WBF SUBSTANCE 820Y
WBF HEBE X376
OVAL F RINGLEADER R579
RUBYS MISS CLEO 964W
W/C LOADED UP 1119Y
MISS WERNING KP 8543U
DOUBLE BAR D TRUE GRIT
DOUBLE BAR D BETTE 190W

	CE	BW	WW	YW	MILK	MCE	MWWT
EPDS	10.1	5.1	96.0	155.4	25.4	4.9	73.4



RLD
603H

Polled Homo Black
Exposed to RUST Primetime 507G, March 28 - June 8, 2021
Preg Checked Safe



Rubys Turnpike 771E -Sire Lot 13A and 13B



Double Bar D Galaxy 101X - Dam



Double Bar D Liberator 412E - Maternal Sib

LOT
14

DOUBLE BAR D *Galaxy* **495H**

• PUREBRED • POLLED • RLD 495H • BPG1321479 • JANUARY 28, 2020 • BW: 90 LBS.

WBF SIGNIFICANT B132	GW-WBF SUBSTANCE 820Y
RUBYS TURNPIKE 771E	WBF HEBE X376
RUBYS MISS CLEO 240Z	OVAL F RINGLEADER R579
	RUBYS MISS CLEO 964W
ACS BLACK JACK 758T	WHEATLAND RED TEDDY 457P
DOUBLE BAR D GALAXY 101X	WGAJ JONESY'S NEON 24N
WINDMILL MS GALAXY 161U	IPU RED GALAXY 110R
	RED PEPPERETTE

	CE	BW	WW	YW	MILK	MCE	MWWT
EPDS	8.5	3.9	79.5	126.8	23.9	4.2	63.7

Polled Homo Black

495H is a very smooth made, feminine Turnpike daughter that exemplifies extra rib and middle. Her dam Galaxy 101X is a very consistent producer of superior progeny with the most notable Law Maker son Liberator owned by Ericson and W2 Her Primetime mating will be very exciting!

Exposed to Rust Primetime 507G, March 28 - June 8, 2021.

Preg Checked Safe

LOT
15

DOUBLE BAR D *BR* **494H**

• PUREBRED • POLLED • RLD 494H • BPG1321478 • JANUARY 28, 2020 • BW: 78 LBS.

W/C BANKROLL 811D	W/C LOADED UP 1119Y
DOUBLE BAR D BANKROLL 507F	MISS WERNING KP 8543U
DOUBLE BAR D SUSAN 558B	SVS CAPTAIN MORGAN 11Z
	WLE CRUISIN SUSAN T26
SWAN LAKE BIG RED 85 B	KWA FLYF RED MOUNTAIN 16Z
DOUBLE BAR D RED GIRL 607E	SWAN LAKE LILI 115Z
BLCC MISS RED ROCK 334X	KWA RED ROCK 5T
	BLCC MISS RED LABEL 178S

	CE	BW	WW	YW	MILK	MCE	MWWT
EPDS	10.8	3.9	78.7	118.5	27.1	6.6	66.5

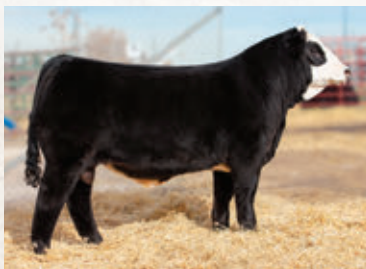
Homo Polled Hetro Black

494H is a beautiful power heifer that is sired by 507F (Bankroll son). Can't help but see the Captain Morgan influence shining through in her. Two powerful cows on the paternal side, 8543U and Cruisin Susan. Granddam on the bottom side was purchased from Bonchuks, Mb.

Observed bred to Rust Primetime 507G, April 5, 2021

Exposed to Rust Primetime 507G, March 28 - June 8, 2021.

Preg checked safe



Double Bar D Bankroll 507F- Sire



RLD

494H



LOT 16 **DOUBLE BAR D** *Blk Cherry* 627H

• PUREBRED • POLLED • RLD 627H • BPTG1321650 • MARCH 15, 2020 • BW: 82 LBS.

W/C LOADED UP 1119Y
W/C BANKROLL 811D
MISS WERNING KP 8543U

MR HOC BROKER
IRCC CHERRY BOMB 513C
INDIAN RIVER SPIRIT

REMINGTON LOCK N LOAD 54U
AUBREYS BLACK BLAZE III
WAGR DREAM CATCHER 03R
MISS WERNING 534R
SVF STEEL FORCE S701
JM BF H25
FVFR RED SKY 40L
INDIAN RIVER PROTEGE

GE	BW	WW	YW	MILK	MCE	MWWT
8.5	2.6	72.0	95.2	26.1	5.7	62.1

Polled Hetro black

Blk Cherry 627H is an incredible mid march born Bankroll heifer who is very correct and elegant in composition yet broody enough to kick out herdbulls. She moves out flawlessly and is arguably the highest quality bred we have ever offered. Her dam IRCC Cherry Bomb consistently produces top notch offspring that rise to the top no matter her mating. 627H's Primetime mating will be highly anticipated.

Don't miss out on this opportunity to own this potential show cow and definite front pasture masterpiece!

Exposed to Rust Primetime 507G, March 28 - June 8, 2021
Preg checked safe



IRCC Cherry Bomb 513C - Dam



W/C Bankroll 811D - Sire



Full Sib
Sold to Percyview Farms



Double Bar D Payton 425B - Dam
Lots 17A and 17B

RLD
558H

CHOICE LOT

LOT **17A** **DOUBLE BAR D** *Payton* **558H**

LOT **17B** **DOUBLE BAR D** *Payton* **634H**

• PUREBRED • POLLED • RLD 558H • BPTG1321533 FEBRUARY 15, 2020 • BW: 87 LBS.

• PUREBRED • POLLED • RLD 634H • BPTG1321384 MARCH 18, 2020 • BW: 80 LBS.

W/C LOADED UP 1119Y
W/C BANKROLL 811D
MISS WERNING KP 8543U

JF AMERICAN PRIDE 0987X
DOUBLE BAR D PAYTON 425B
DOUBLE BAR D PAYTON 658Z

REMINGTON LOCK N LOAD 54U
AUBREYS BLACK BLAZE III
WAGR DREAM CATCHER 03R
MISS WERNING 534R
MR NLC UPGRADE U8676
WLE CRUISIN SUSAN T26
SPRINGCREEK TEDDY 72U
DOUBLE BAR D PAYTON 49T

W/C LOADED UP 1119Y
W/C BANKROLL 811D
MISS WERNING KP 8543U

JF AMERICAN PRIDE 0987X
DOUBLE BAR D PAYTON 425B
DOUBLE BAR D PAYTON 658Z

REMINGTON LOCK N LOAD 54U
AUBREYS BLACK BLAZE III
WAGR DREAM CATCHER 03R
MISS WERNING 534R
MR NLC UPGRADE U8676
WLE CRUISIN SUSAN T26
SPRINGCREEK TEDDY 72U
DOUBLE BAR D PAYTON 49T

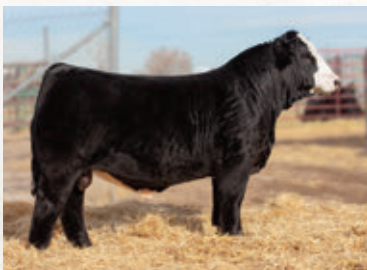
	CE	BW	WW	YW	MILK	MCE	MWWT
EPDS	12.3	1.7	73.1	104.9	24.9	7.3	61.5

Homo Polled Homo Black

	CE	BW	WW	YW	MILK	MCE	MWWT
EPDS	12.3	1.7	73.1	104.9	24.9	7.3	61.5

Homo Polled Homo Black

Payton 425B and Bankroll are both prolific and exceptionally consistent cross. The Bankroll and American Pride combination reveals extra femininity and extension all while maintaining excellent rib and hip structure. Full sib brother Annuity sold to Bruce Cuddy NC for \$54000 in 2019. Watch for Annuity's daughters consigned by Bouchard Livestock Int. 558H and 634H are very similar heifers that exhibit the same attributes. Their dam 425B is arguable the best proven black cow at DBD. She is very feminine with great volume on a very correct frame with excellent feet and udder qualities. Your choice on these females and DBD is very content to retain the remaining heifer. These will be highly productive females. 558H AI'd to NCB Cobra 47Y, April 5, 2021 and April 20, 2021. Exposed to W/C Relentless 007G, April 23 - June 8, 2021 Preg checked safe. 634H AI'd to Wheatland Man O' War 907G, May 1, 2021 Preg checked safe. Exposed to W/C Relentless 007G, May 1 - June 8, 2021 Vet opinion is to AI breeding



Double Bar D Annuity 635F- Full Sib
Lots 17A and 17B



RLD
634H



Double Bar D Brett 454B

RLD
474H

LOT **18** DOUBLE BAR D *Brett* **474H**

LOT **19** DOUBLE BAR D *Tequila* **442H**

• PUREBRED • POLLED • RLD 474H • BPTG1321366 • JANUARY 23, 2020 • BW: 94 LBS.

• PUREBRED • POLLED • RLD 442H • BPG1321347 • JANUARY 17, 2020 • BW: 88 LBS.

W/C LOADED UP 1119Y
W/C BANKROLL 811D
MISS WERNING KP 8543U

REMINGTON LOCK N LOAD 54U
AUBREYS BLACK BLAZE III
WAGR DREAM CATCHER 03R
MISS WERNING 534R

JF AMERICAN PRIDE 0987X
DOUBLE BAR D BRETT 454B
DOUBLE BAR D BRETT 161U

MR NLC UPGRADE U8676
WLE CRUISIN SUSAN T26
BISS TOBY 818P
DOUBLE BAR D BLACKBIRD 97

W/C LOADED UP 1119Y
W/C BANKROLL 811D
MISS WERNING KP 8543U

REMINGTON LOCK N LOAD 54U
AUBREYS BLACK BLAZE III
WAGR DREAM CATCHER 03R
MISS WERNING 534R

DOUBLE BAR D DRIFTWOOD 83
DOUBLE BAR D TEQUILA 620Y
CMS TEQUILA 719T

DRIFTING "M" LP 59L
DOUBLE BAR D LILI 59M
REMINGTON RED LABEL HR
CMS RADISSON 41R

CE	BW	WW	YW	MILK	MCE	MWWT
13.1	1.9	72.0	105.0	19.5	8.6	55.5

CE	BW	WW	YW	MILK	MCE	MWWT
7.3	4.0	79.1	121.5	25.6	5.5	65.2

Homo Polled Homo Black

Brett 474H is a beautiful Bankroll daughter that is very well balanced, full of capacity with an excellent full level hip. The Brett Cow family has been, without question, a consistent "cut above" family. Brett 474H full sister, 536F was MB Ag Ex back to back divisional champion. Her maternal Turnpike sibling sold to Horner Cattle Co in Share the Herd 2020 Her mating to W/C Relentless 007G is well anticipated. Exposed to W/C Relentless 007G, April 1 - June 8, 2021
Preg checked safe

Homo Polled Homo Black

Tequila 442H is a real powerful, performance type of female that is wrapped up in an attractive and well balanced package. Dam 620Y has been a very good producing dam here at DBD, with 7 calves being registered to date with a very, very good Man O War bull calf selling at Best of Both Worlds 2022. Observed bred to Rust Primetime 507G, March 30, 2021
Exposed to Rust Primetime 507G, March 28 - June 8, 2021
Preg checked safe



W/C Bankroll 811D - Sire



RLD
442H



Double Bar D Annuity 635F - Sire of Lots 20 - 23

LOT
20

BBN *Diamond* **6H**

• PUREBRED • POLLED • BBN 6H • APPLIED FOR • MARCH 5, 2020 • BW: 90LBS • ET.

W/C BANKROLL 811D
DOUBLE BAR D ANNUITY 635F
DOUBLE BAR D PAYTON 425B

PROFIT
WAGR DIAMOND 10D
3C MELODY M668 BZ

W/C LOADED UP 1119Y
MISS WERNING KP 8543U
JF AMERICAN PRIDE 0987X
DOUBLE BAR D PAYTON 658Z

WS PILGRIM H182U
WAGR PANARAMA 204Z
HART SUBZERO G322
3C CROCUS G374 BZ

CE	BW	WW	YW	MILK	MCE	MWWT
6.7	4.5	73.2	104.5	24.5	4.3	61.0

LOT
21

BBN *Diamond* **7H**

• PUREBRED • POLLED • BBN 7H • APPLIED FOR • MARCH 5, 2020 • BW: 85 LBS • ET..

W/C BANKROLL 811D
DOUBLE BAR D ANNUITY 635F
DOUBLE BAR D PAYTON 425B

PROFIT
WAGR DIAMOND 10D
3C MELODY M668 BZ

W/C LOADED UP 1119Y
MISS WERNING KP 8543U
JF AMERICAN PRIDE 0987X
DOUBLE BAR D PAYTON 658Z

WS PILGRIM H182U
WAGR PANARAMA 204Z
HART SUBZERO G322
3C CROCUS G374 BZ

CE	BW	WW	YW	MILK	MCE	MWWT
6.7	4.5	73.2	104.5	24.5	4.3	61.0

Both of these heifers are sired by Double Bar D Annuity 635F, the lead off purebred bull in the 2019 Double Bar D bull sale. Both heifers are big topped, deep ribbed, and drop-dead fancy fronted. These heifers will be the first daughters of the Diamond 10D cow to sell, her first son to sell was the \$120,000 Focus bull that sold as a yearling in the Hartman Cattle Co. bull sale. The 6H, black female and the 7H, red baldy female are phenotypically the kind you can raise either fancy show heifers with or that powerful, soggy herd bull, depending on how you mate them. The new owner will have the ability to determine that direction. The black heifer is safe to the popular homo-black calving ease bull, Proclamation and the red heifer is safe to the high selling, red calving ease bull out of the Ashworth Farm & Ranch bull sale for \$41,500 to Bouchard Livestock and G&D/Martin Simmental in North Dakota. The two embryo lots will result in full siblings to these two bred heifers, leaving very little guesswork. There will be a guarantee of 1 pregnancy per lot of three embryos. Consigned by Bouchard Livestock
BBN 6H AI'd to WS Proclamation E202 May 26, 2021, Ultrasounded safe, No Exposure
BBN 7H AI'd to KWA Can-Am 123H May 23, 2021, Ultrasounded safe, No Exposure



LOT
22

3 EMBRYOS

WAGR DIAMOND 10D X DOUBLE BAR D ANNUITY 635F

Guaranteed one (1) pregnancy if implanted by a certified technician.
Consigned by Bouchard Livestock



LOT
23

3 EMBRYOS

WAGR DIAMOND 10D X DOUBLE BAR D ANNUITY 635F

Guaranteed one (1) pregnancy if implanted by a certified technician.
Consigned by Bouchard Livestock



RLD
522H



SVS Captain Morgan 11Z



WFL Scarface 71F - Sire

LOT
24

DOUBLE BAR D *Lady* **522H**

• PUREBRED • POLLED • RLD 522H • BPG1369646 • FEBRUARY 3, 2020 • BW: 65 LBS.

SPRINGCREEK BLUE CHIP 9D
WFL SCARFACE 71F \ HP-HOP
WFL MS ELEGANCE 403BV

SVS CAPTAIN MORGAN 11Z
DOUBLE BAR D LADY 990E
WHEATLAND LADY 822U

SPRINGCREEK LINER 56U
SPRINGCREEK TARA 111R
MR HOC BROKER
LFE MARIAH 112M
HARVIE JDF WALLBANGER 111X
SUNNYVALLEY BLK JENNA 88U
WHEATLAND BULL 680S
WHEATLAND LADY 638 S

CE	BW	WW	YW	MILK	MCE	MWWT
7.3	3.8	86.1	130.8	27.0	3.6	70.1

Homo Polled Hetro Black

Lady 522H is a real robust Westway bred Scarface daughter that is bred right, going back to Wheatland Lady 822U. You can't help but notice the strong breeding influence of SVS Captain Morgan in her genes. I believe her type and kind will cross beautifully to her mating to W/C Relentless 007G. Exposed to W/C Relentless 007G, April 1 - June 8, 2021
Preg checked safe

LOT
25

DOUBLE BAR D *Kassie* **459H**

• PUREBRED • POLLED • RLD 459H • BPG1321456 • JANUARY 21, 2020 • BW: 76 LBS.

MR HOC BROKER
RHF BROKER EMPEROR 710E
RHF STUBBY SARNIA 302Z

JF AMERICAN PRIDE 0987X
DOUBLE BAR D KASSIE 623D
DOUBLE BAR D KASSIE 451Z

SVF STEEL FORCE S701
JM BF H25
LFE BS LEWIS 322U
RHF SARNIA 6S
MR NLC UPGRADE U8676
WLE CRUISIN SUSAN T26
DOUBLE BAR D GUNNER 123U
DOUBLE BAR D KASSIE 226U

CE	BW	WW	YW	MILK	MCE	MWWT
10.8	2.0	64.8	94.1	21.0	5.5	53.4

Homo Polled Hetro Black

Kassie 459H is a very complete, deep bodied RHF Broker Emperor daughter. Her American Pride dam will be an asset to the maternal side of this great family. Her Bankroll Mating will be good. AI'd to W/C Bankroll 811D April 15, 2021. Exposed to Rust Primetime 507G, April 23 - June 8, 2021. Preg checked safe, Vet opinion to AI breeding



RHF Broker Emperor 710E - Sire



JF American Pride 0987X



RLD
459H



LOT
26

HFL *Miss* 031H

•PUREBRED • POLLED • HFL 031H • BPG1312131 • JANUARY 25, 2020 • BW: 85 LBS.

REMINGTON LOCK N LOAD 54U
W/C LOADED UP 1119Y
AUBREYS BLACK BLAZE III

REMINGTON ON TARGET 2S
BAR 15 MISS KNIGHT78E-51G
3C MACHO M450 BZ
BLAZE IV 1P

LRX WALLY 39A
DHS MISS 28C
ACS MS DRIFTER 188X

HARVIE JDF WALLBANGER111X
LRX MS ACE 10X
MFR DRIFTER 804U
ACS MS PARADISE 40H

CE	BW	WW	YW	MILK	MCE	MWWT
8.9	3.7	75.1	114.5	26.6	5.1	64.2

A very stylish and attractive made female with the perfect baldie face. We really appreciate this female for her foot quality, smooth shoulder and extension through her front 3rd, to top it off with a beautiful skull and big fluffy ears. She is a female with loads of style and eye appeal. We purchased her mother at shades in 2016 and she has been a great production female weaning off some of the heavy weights of the fall. Her first and only son was sold to Griffin Zalluski and her daughters have all been retained in our herd. They've been the heavy milking and hardworking type of females that look good doing it.

Bred to HFL Vision 8035F April 25, 2021 Favourable to April 25, 2021 breeding.
Consigned by Horner Cattle Company



HFL Vision 8035F - Service Sire



LOT
28

HFL *Savvy* 0147H

•PUREBRED • POLLED • HFL 0147H • BPG1312154 • MARCH 26, 2020 • BW: 90 LBS.

LFE BS LEWIS 420B
MRL 291F \ CC-HOB
TSN MS EDITION 55W \ HP-HOP

LFE RICH RAY 369Z
LFE HEAVEN SENT 30X
TH BLACK EDITION 8R
MRL MISS 899S

SVS CAPTAIN MORGAN 11Z
DOUBLE BAR D SAVVY 424E
DOUBLE BAR D SAVVY 2020A

HARVIE JDF WALLBANGER111X
SUNNYVALLEY BLK JENNA 88U
JF MILESTONE 999W
EBS SAVANNAH GINA

CE	BW	WW	YW	MILK	MCE	MWWT
7.1	3.3	77.4	119.4	22.4	4.9	61.1

We really like this end of March born bred heifer, but her stacked pedigree is perhaps the most intriguing part. Loaded with the likes of Captain Morgan, Milestone, Raven, Heaven Sent, Ms Edition 55W and the Savvy 2020A donor who has done so much for the Double Bar D program. She's bred early to Bounty Hunter and will have quick ROI.

This is a heifer we really appreciate first and foremost for her overall foot size and quality. Which seems to be a very common trend in the 424E daughters. A very well balanced and complete female that is hard to pick a hole in, backed up with a stacked pedigree.

Last year a maternal sibling sold to Longview, we told ourselves we couldn't part with another 424E daughter. However, 424E has weaned off yet another whale of a heifer calf, this time sired by Heatseeker. We decided to roll the dice yet again and offer up this great female at Double Bar D and Friends Sharing the Herd Female sale.

AI'd to WLB Bounty Hunter 365C, March 31, 2021. Exposed to HFL VISION 8035F April 1- May 30, 2021. Vet expects favourable to AI.
Consigned by Horner Cattle Company



Maternal sibling sold to Longview in 2020

LOT
27

HFL *Lolita* 098H

•PUREBRED • POLLED • HFL 098H • BPG1312141 • FEBRUARY 24, 2020 • BW: 88 LBS.

COME AS U R RED ROCKET
MRL MISSILE 138C
MRL MISS 2423Z

MRL 130Y
MISS XCITING 14X
LFE BUNDI 300X
MRL MISS 493U \ HP-HOP
KWA FLYF RED MOUNTAIN 16Z
SWAN LAKE LILI 115Z
JF AMERICAN PRIDE 0987X
MFI LOLITA 40M

SWAN LAKE BIG RED 85 B
DOUBLE BAR D LOLITA 474E
DOUBLE BAR D LOLITA 512B

CE	BW	WW	YW	MILK	MCE	MWWT
7.0	3.9	84.7	120.3	20.8	1.0	63.2

Another female backed by a great cow that we purchased in a heifer package from Double Bar D in 2018. These cows have been power production cows and I expect these daughters to follow closely in their foot steps. 474E is a favourite here, her perfectly balanced udder and foot quality is outstanding. When visitors come she is always one of the first cows noticed due to her perfectly balanced and square "show cow udder." She has been an absolute power production cow, with her first daughter selling to Katie Falconer of Sweet Grass Ranch and a Cherry Red Endgame heifer for this year who is outstanding and won't be leaving the farm!

Starting from the ground up this heifer stands on an excellent big foot. She's extremely powerful with ample rib shape, muscle expression and extra length of spine. While being so expressive and powerful she ties into a smooth shoulder and moves out so freely. Unfortunately a heifer that didn't want to cooperate with us on picture day and is a female that needs to be seen to be appreciated. Her mother is excellent and the Missile cattle have been outstanding for us.

AI'd to WLB Bounty Hunter 365C, April 9, 2021. Exposed to HFL Vision 8035F April 10-May 30, 2021. Vet expects favourable to AI.
Consigned by Horner Cattle Company



HFL
0147H



RLD
472H

LOT
29

DOUBLE BAR D Goldie 472H

•PUREBRED • POLLED • RLD 472H • PTG1313015 • JANUARY 23, 2020 • BW: 88 LBS.

W/C LOADED UP 1119Y
W/C BANKROLL 811D
MISS WERNING KP 8543U
WFL WESTCOTT 24C
MAF GOLDIE 140E \ HP-HEP
MS. SPECIALIST 119Z \ HP-HEP

REMINGTON LOCK N LOAD 54U
AUBREYS BLACK BLAZE III
WAGR DREAM CATCHER 03R
MISS WERNING 534R
TNT 90 PROOF Z401
WFL SWEET LICIOUS 1044X
RED SPECIALIST 70T
MS. RED ESSENCE 139X

CE	BW	WW	YW	MILK	MCE	MWWT
9.3	2.9	79.4	114.3	26.9	4.9	66.6

Polled

Heres an amazing red W/C Bankroll daughter that should be staying in the herd but nonetheless she is being offered for sale. Can't say enough about her Fornwald bred Dam as she continues to produce very well here at DBD. Goldie 472H is very very hard to fault and excels in hip structure, rib shape and femininity.

472H's full brother was lead off red bull (Red Wave) at our Best of Both Worlds 2021 sale going to Curtis Simmental. Red Wave has continued to develop and looks very good presently as a young and upcoming herd sire.

Exposed to RUST Rest Easy, May 15-June 8, 2021. AI'd to JPCC Ignition166F April 16, 2021 and May 4, 2021 Preg checked safe.



Double Bar D Red Wave 2005H - Full Sib



MAF Goldie 140E - Dam



RLD
520H



KWA Law Maker 59C - Sire

LOT **30** DOUBLE BAR D *Emily* 520H

• PUREBRED • POLLED • RLD 520H • PG1321494 • FEBRUARY 3, 2020 • BW: 90 LBS.

- CDI AUTHORITY 77X
- KWA LAW MAKER 59C
- KWA MS ROCK 14X
- 52N ACCELERATOR 222U
- NUG EMILY 113A
- MECK EMILY 870U
- NF TRUMP S582
- CDI MS CROCKET 88T
- KWA RED ROCK 5T
- KWA MS BARON 9U
- TNT ACCELERATOR S226
- RED POCAHONTAS 52N
- LBR CROCKET R81
- PVFS POL JOCELYN 55J

CE	BW	WW	YW	MILK	MCE	MWWT
5.1	4.5	82.2	128.1	24.8	0.5	65.9

Polled
Emily 520H is a big topped, long bodied KWA Law Maker daughter that is setting up a beautiful udder as we have come to expect from the Law Maker females. Her dam is a dark red Maxwell bred female that has produced good here at Double Bar D.
Exposed to Rust Rest Easy 516G March 29 - June 8, 2021 Preg checked safe

LOT **31** DOUBLE BAR D *Miss* 400H

• PUREBRED • POLLED • RLD 400H • PG1321307 • JANUARY 1, 2020 • BW: 70 LBS.

- MRL 67X
- MRL WESTERN FORCE 251B
- MRL MISS 2543Z
- MAPEL LAKE 5168
- JHM MISS 84F
- MISS 51C
- MRL RED FORCE 12U
- RED SATIN 177M
- RED WESTERN 49X
- MRL MISS 212L
- WHEATLAND HIGHVOLTAGE 122Y
- MAPLE LAKE MS RIDER 1068
- WFL ABSOLUTE 51Y
- JHM MISS 301 A

CE	BW	WW	YW	MILK	MCE	MWWT
6.6	3.6	77.3	120.3	28.8	2.5	67.5

Homo Polled
Dam is a great female bought from Maccrostie Livestock in Ontario with 400H in dam. Going back to Wheatland predator and WFL Absolute. Miss 400H is dark red on a very correct structure with excellent capacity.
Exposed to Rust Rest Easy March 29 - June 8, 2021 Preg checked safe



RLD
400H



RLD
45H

LOT
32

DOUBLE BAR D *Adora* **45H**

• FULL BLOOD • POLLED • RLD 45H • PT1313165 • JANUARY 22, 2020 • BW: 86 LBS.

HEMR SAMURAI 7S
ANCHOR D IMAX 250Y
DORA LEE ELEXIS

ANCHOR "T" IKON 1H
JB CDN KANASKIS 4019
DORA LEE JAKE
DORA LEE ELECTRA

DOUBLE BAR D EVEREST 103U
DOUBLE BAR D ADORA 148X
DOUBLE BAR D ADORA 224S

DOUBLE BAR D EVEREST 4R
DOUBLE BAR D JERICO 5L
BHR DRACO SA 628N
SALMON ARM ADORA

CE	BW	WW	YW	MILK	MCE	MWWT
7.7	4.5	64.1	89.6	39.9	3.3	71.9

Homo Polled Full Fleckvieh Dilution Free

Adora 45H is a breed improver Homozygous polled full fleckvieh female that exudes many, if not all, the elite marketing factors in Fleckvieh industry. Adora 45H is a very dark red and heavily pigmented Anchor D Imax daughter that is built right with excellent feet and legs with powerful length of body and great full hip. She is setting up a quality udder that will be in it for the long haul. Her dam Adora 148X is a volume made polled fleck cow that has produced many offspring with 5 females being retained at DBD and most notable BLueprint son going to Kinzies at Saskatoon. DBD reserves the option to flush Adora 45H in the future at sellers expense and buyers convenience.

Her guaranteed homo polled calf from SVS Gambler should be a nice coupon one year from now or sooner.

Exposed to SVS Gambler 33H March 29 - June 3, 2021 Preg checked safe.



Gramp's and Gram's Understudies



Double Bar D Adora 148X - Dam



Double Bar D Rivalry 16F - Sire

LOT
33

DOUBLE BAR D Adora 89H

• FULL BLOOD • POLLED • RLD 89H • P1313847 • FEBRUARY 4, 2020 • BW: 87 LBS.

- DOUBLE BAR D RIVAL 28D
- DOUBLE BAR D RIVALRY 16F**
- DOUBLE BAR D BRENNIA 266Y

- DOUBLE BAR D METROPOLIS
- DOUBLE BAR D ADORA 232A**
- DOUBLE BAR D ADORA 38U

- DOUBLE BAR D RIVAL 201A
- DOUBLE BAR D LYNN 6Y
- MFI FOUNDATION 7094
- DOUBLE BAR D BRENNIA 150U
- SHAWACRES JAHARI 50L
- MFI PETRA 3105
- DOUBLE BAR MAKE M PLLED
- DOUBLE BAR D ADORA 224S

CE	BW	WW	YW	MILK	MCE	MWWT
2.2	5.5	72.2	103.1	41.7	-0.1	77.8

Homo Polled Dilution Free

Adora 89H is another excellent Homo polled Fleckvieh female from the Adora cow family. 89H's great grand dam Adora 224S is most likely the biggest ribbed female to walk the pastures here at DBD. Her sire Rivalry 16F was the high selling polled Fleck going to Robb Farms in Spring of 2019. 89H is very attractive, feminine on a well balanced and correct structure. Her dam 232A is a powerful cow going back to Jahari 50L on the top side..
Exposed to SVS Gambler 33H March 29 - June 3, 2021 Preg checked safe

LOT
34

DOUBLE BAR D Sadie 26H

• FULL BLOOD • POLLED • RLD 26H • P1321676 • JANUARY 18, 2020 • BW: 70 LBS.

- CHAMPS ROMANO
- DOUBLE BAR D ROMANO 14F**
- VIRGINIA JUNI 960Y

- PHS BEDROCK 355B
- LONE STONE SADIE 41E**
- LONE STONE MS HUGO 27Z

- SMITHBILT MOLSON 21M
- CHAMPS PRICILLA
- MFL UNIVERSE 28U
- DFM JUNI 960J
- DONOVANDALE POL IMPRINT
- PHS HOMOZYGOUS X-CLUSIVE
- PROSTOCK HUGO 7052T
- MISS LONESTONE SADIE 38S

CE	BW	WW	YW	MILK	MCE	MWWT
7.0	3.5	76.1	112.1	36.6	3.7	74.7

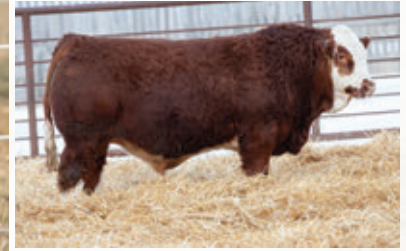
Polled Dilution Free

Sadie 26H is a smooth polled daughter out of our Romano 14F bull that we co own with Mc Quantock of Lloydminster. Sadie is long bodied with adequate rib out of a high selling Lonestone bred female we purchased from the Browns at Westlock.
Exposed to SVS Gambler 33H March 29 - June 8, 2021 Preg checked safe



RLD

26H



Double Bar D Rivalry 16F - Sire

RLD
81H

LOT
35

DOUBLE BAR D *Peg* **81H**

• FULL BLOOD • POLLED • RLD 81H • P1313840 • JANUARY 31, 2020 • BW: 92 LBS.

DOUBLE BAR D RIVAL 28D
DOUBLE BAR D RIVALRY 16F
DOUBLE BAR D BRENNIA 266Y

WLSF HALDOR
WLSF PEGADOR
WLSF PEGEMBU

DOUBLE BAR D RIVAL 201A
DOUBLE BAR D LYNN 6Y
MFI FOUNDATION 7094
DOUBLE BAR D BRENNIA 150U
SALMON ARM HAYES 9M
WLSF VERDORA
KN BULEMBU
WLSF PEGNER

CE	BW	WW	YW	MILK	MCE	MWWT
1.5	6.6	66.3	94.1	36.3	-0.5	69.4

Polled Dilution Free

Another smooth polled Rivalry 16F daughter that is very powerful with good rib dimension with an excellent hip. She is dark red and primed and ready to produce herd bulls. Her mating to SVS Gambler is well anticipated. Dam is a good Wyecrest bred female.

Exposed to SVS Gambler 33H, March 29 - June 3, 2021

Observe bred to SVS Gambler 33H April 3, 2021. Preg checked safe

LOT
36

DOUBLE BAR D *Renata* **106H**

• FULL BLOOD • HORNED • RLD 106H • 1313873 • FEBRUARY 15, 2020 • BW: 86 LBS.

JB CDN WIND WALKER 1102
JB CDN WASHINGTON 1476
JB CDN GIOVANNA 5025

DOUBLE BAR D UNITED 176A
DOUBLE BAR D RENATA 49D
DOUBLE BAR D RENATA 183Z

MFI WHISTLER 47L
JB CDN ERIKA 5024
KN KLYBER
KNIGHT-FROST MISS JADE 1H
MFL UNIVERSE 28U
MFI PETRA 4077
KN BRENAIR PARK HAFKE
MFI RENATA 7086

CE	BW	WW	YW	MILK	MCE	MWWT
0.0	6.3	67.2	93.1	34.6	-2.8	68.2

Dilution Free

Renata 106H is a stout made JB Washington daughter. Her dam is a great United daughter going back to the powerful Renata MFI cow herd. Her polled Gambler Calf should be very marketable.

Exposed to SVS Gambler 33H March 29 - June 3, 2021.

Preg checked safe



JB CDN Washington 1476 - Sire



RLD
106H



RLD

23H

LOT
37DOUBLE BAR D *Gundi* 23H

• FULL BLOOD • HORNED • RLD 23H • 1313145 • JANUARY 18, 2020 • BW: 75 LBS.

FGAF FRENCH ATTACK 010C
ANCHOR D MOTOWN 865E
FGAF PRECIOUS THING 402TSTARWEST POL BLUEPRINT
DOUBLE BAR D GUNDI 6E
DOUBLE BAR D GUNDI 398ASIBELLE DIRTY HARRY 25Z
VIRGINIAS JANE WEST
R-FIVE MALTESE
FGAF SHANTI 121P
ANCHOR "T" RUSTY 59G
PHS HOMOZYGOUS XCEPTIONAL
MFI FOUNDATION 7094
DOUBLE BAR D GUNDI 110T

CE	BW	WW	YW	MILK	MCE	MWWT
8.7	3.1	74.7	109.8	35.1	3.9	72.5

Dilution Free

Gundi 23H is a very good Motown daughter that is setting up a quality udder. She has good dimension with an excellent topline and great forerib expression. Gentle in disposition as is her dam 6E. Ready to go to work for her new owners with a rewarding Gambler calf due in January.

Exposed to SVS Gambler 33H March 29 - June 3, 2021

Preg checked safe

LOT
38DOUBLE BAR D *Bonnie* 103H

• FULL BLOOD • HORNED • RLD 103H • T1313867 • FEBRUARY 14, 2020 • BW: 68 LBS.

FGAF FRENCH ATTACK 010C
ANCHOR D MOTOWN 865E
FGAF PRECIOUS THING 402TFGAF MASAIL 307S
DOUBLE BAR D BONNIE 332U
DOUBLE BAR D BONNIE 031KSIBELLE DIRTY HARRY 25Z
VIRGINIAS JANE WEST
R-FIVE MALTESE
FGAF SHANTI 121P
ANCHOR "T" LEGEND 7H
MFI ZAILA 51M
BARABAS
BAR NONE BONNIE LASS

CE	BW	WW	YW	MILK	MCE	MWWT
6.2	4.7	72.4	107.4	29.0	1.8	65.2

Dilution Free

Bonnie 103H shouldn't be leaving DBD but will offer this breeding female as we have retained a full sib female to 103H. Dam is the dam of Double Bar D Chisholm, sold to Silver Lake Simmental MB, who has made an impact for them as well as many who have used him through AI. Bonnie 332U was very youthful at 13 years old with perfect feet and udder. Longevity and quality = profit.

Observed bred to SVS Gambler 33H April 5, 2021. Preg checked safe

Exposed to SVS Gambler 33H March 29 - June 3, 2021



Anchor D Motown 865E - Sire



RLD

103H



LOT
39

DOUBLE BAR D *Celine* 44J

•FULL BLOOD • POLLED • RLD 44J • P1348465 • JANUARY 22, 2021 • BW: 80 LBS.

BIG HILLS CANE 62B
GRINALTA'S HP SENSATION FF909D \ HP-HOP
GRINALTA'S FRITA-PPFF 109W

DOUBLE BAR D THUNDER 273X
DOUBLE BAR D CELINE 267C
DOUBLE BAR D CELINE 10X

MACKENZIE'S CANE 122Y
EAGLE-RIDGE ZABIA
GRINALTA'S HP KING 126S
GRINALTA'S BERTA PFF 109T
PRL PORTERHOUSE REGENT
MFI SHAMU 3137
DOUBLE BAR D ADONIS 603N
DORA LEE CELINE FF22P

CE	BW	WW	YW	MILK	MCE	MWWT
4.2	4.5	65.5	92.4	36.7	2.9	69.5

Polled

Celine 44J is an interesting polled Full Fleckvieh female that deserves the astute cattlemen's attention. Dark red, awesome pigmentation, hair, structure all packaged together in a very eye pleasing way. Her pedigree on the bottom side is stacked with the Celine Cow Family from Dora Lee Simmental, Ont that has done such a good job here at DBD along with the powerful bulls, Thunder and Adonis 603N who turn up time after time in the 'good ones'. We are pleased with how Sensation has worked here and a few of his bulls will be offered in 2022 Best of Both Worlds Sale.



Grinalta's HP Sensation FF909D - Sire



Double Bar D Batman - Sire Lots 40 and 41

LOT
40

DOUBLE BAR D Helga 2J

• FULL BLOOD • POLLED • RLD 2J • P1366411 • JANUARY 6, 2021 • BW: 74 LBS.

STARWEST POL BATMAN
DOUBLE BAR D BATMAN 216E
DOUBLE BAR D PEGNER 146B

DOUBLE BAR D AVENGER 190D
DOUBLE BAR D HELGA 56G
DOUBLE BAR D HELGA 9Y

DOUBLE BAR D SPITFIRE 20X
FGAF SHEENA 843Y
MFI JEREMIAH 9022
WLSF PEGNER 5TH
DOUBLE BAR D UNITED 176A
DOUBLE BAR D SELAH 140Y
DOUBLE BAR D EVEREST 103U
MFI HELGA 5165

CE	BW	WW	YW	MILK	MCE	MWWT
-0.5	7.2	81.2	117.4	30.7	-1.9	71.3

Polled Dilution Free

A polled 216E daughter that will add power and quality for her new owner. A real great chance to own into the Helga cow family and polled to boot! Dark red, long spined and ready to mate to the bull of your choice

LOT
41

DOUBLE BAR D Maria 32J

• FULL BLOOD • POLLED • RLD 32J • P1348309 • JANUARY 16, 2021 • BW: 76 LBS.

STARWEST POL BATMAN
DOUBLE BAR D BATMAN 216E
DOUBLE BAR D PEGNER 146B

LFS POL BALBOA 40U
DOUBLE BAR D MARIA 33G
DOUBLE BAR D MARIA 3E

DOUBLE BAR D SPITFIRE 20X
FGAF SHEENA 843Y
MFI JEREMIAH 9022
WLSF PEGNER 5TH
DAYTON'S POL NEUMANN
RRV NATALIE
STARWEST POL BLUEPRINT
DOUBLE BAR D MARIA 312B

CE	BW	WW	YW	MILK	MCE	MWWT
4.1	5.3	71.6	99.9	32.2	2.8	68.0

Polled Dilution Free

Another great polled 216E daughter that is very correct in composition with excellent pigment markings. The Riverbend Maria Cow Family dates back here over 25 years and many times rises to the top.. The Maria Cow Family is always a good investment.





LOT
42

DOUBLE BAR D *Ali* **3J**

• FULL BLOOD • HORNE D • RLD 3J • 1348091 • JANUARY 6, 2021 • BW: 88 LBS.

FGAF FRENCH ATTACK 010C
ANCHOR D MOTOWN 865E
FGAF PRECIOUS THING 402T

DOUBLE BAR D UNITED 176A
DOUBLE BAR D ALI 23D
WLSF ALIDAHA

SIBELLE DIRTY HARRY 25Z
VIRGINIAS JANE WEST
R-FIVE MALTESE
FGAF SHANTI 121P
MFL UNIVERSE 28U
MFI PETRA 4077
SALMON ARM HAYES 9M
WLSF ELDIDA

CE	BW	WW	YW	MILK	MCE	MWWT
2.0	6.5	75.6	114.0	28.4	-2.2	66.2

Dilution Free

A very powerful + performance Motown daughter that really shines in her overall dimension. Her young United dam is a good cow going back to a nice Wyecrest bred female



Anchor D Motown 865E - Sire

LOT
43

DOUBLE BAR D *Feather* **72J**

• FULL BLOOD • HORNE D • RLD 72J • 1358806 • FEBRUARY 4, 2021 • BW: 78 LBS.

FGAF FRENCH ATTACK 010C
ANCHOR D MOTOWN 865E
FGAF PRECIOUS THING 402T

MFI JEREMIAH 9022
DOUBLE BAR D FEATHER 147A
DOUBLE BAR D FEATHER 43W

SIBELLE DIRTY HARRY 25Z
VIRGINIAS JANE WEST
R-FIVE MALTESE
FGAF SHANTI 121P
GIBBONS JEREMIAH
MFI PETRA 2093
FGAF MASAIL 307S
DOUBLE BAR D FEATHER 198T

CE	BW	WW	YW	MILK	MCE	MWWT
4.6	4.6	75.0	107.2	32.8	0.3	70.3

Dilution Free

Feather 72J is a front pasture candidate if ever I saw one! Check out her dam 147A who is a Full sister to Banker, sold to Virginia Ranch AB.



Double Bar D Feather 147A - Dam



RLD
72J



We purchased Onyx 451W with the assurance of knowing that she is an elite and excellent producer. STF Onyx, the two time NAILE Champion has an impressive 141 progeny recorded and her dam, Caliente has 178. You can purchase these Onyx Embryos with confidence that the resulting progeny will be a cut above. Onyx works very good in IVF thus we can offer her genetics to the industry while being able to retain many as well. We can't wait for her calves to hit the ground Jan 2022. Be on the ground floor especially here in Canada to invest in this breeding Masterpiece

LOT
44A

3 EMBRYOS

STF ONYX 451W X W/C BANKROLL 811D

Qualified for USA/CAN. Guaranteed one (1) pregnancy if implanted by a certified technician. Stored at Trans Ova Genetics, Iowa.

LOT
44B

3 EMBRYOS

STF ONYX 451W X W/C BANKROLL 811D

Qualified for USA/CAN. Guaranteed one (1) pregnancy if implanted by a certified technician.

LOT
44C

3 EMBRYOS

STF ONYX 451W X W/C BANKROLL 811D

Qualified for USA/CAN. Guaranteed one (1) pregnancy if implanted by a certified technician.



SVS CAPTAIN MORGAN 11Z

W/C LOADED UP 1119Y
W/C BANKROLL 811D
MISS WERNING KP 8543U

STF DOMINANCE T171
STF ONYX 451W
GCF MISS CALIENTE

PE	CE	BW	WW	YW	MILK	MCE	MWWT
EPDS	13.5	2.7	64.9	91.5	23.3	5.8	55.7

REMINGTON LOCK N LOAD 54U
AUBREYS BLACK BLAZE III
WAGR DREAM CATCHER 03R
MISS WERNING 534R
STF DOMINIQUE R170
MMP KISS THIS 37L
SAC MR MT 73G
SS ME TOO LOG



W/ C Bankroll 811D

LOT
44D

3 EMBRYOS

STF ONYX 451W X SVS CAPTAIN MORGAN 11Z

Qualified for USA/CAN. Guaranteed one (1) pregnancy if implanted by a certified technician.

HARVIE JDF WALLBANGER111X
SVS CAPTAIN MORGAN 11Z
SUNNYVALLEY BLK JENNA 88U

STF DOMINANCE T171
STF ONYX 451W
GCF MISS CALIENTE

PE	CE	BW	WW	YW	MILK	MCE	MWWT
EPDS	10.5	3.8	69.9	105.8	21.7	3.4	56.6

SHS ENTICER P1B
JDF PEPSI 61U
RLA REDSTREAM 152S
WLB 32H JENNA 360R
STF DOMINIQUE R170
MMP KISS THIS 37L
SAC MR MT 73G
SS ME TOO LOG

LOT
44E

3 EMBRYOS

STF ONYX 451W X W/C BET ON RED 481H

Qualified for USA/CAN/AUS. Guaranteed one (1) pregnancies if implanted by a certified technician. Sexed Female

LOT
44F

3 EMBRYOS

STF ONYX 451W X W/C BET ON RED 481H

Qualified for USA/CAN/AUS. Guaranteed one (1) pregnancies if implanted by a certified technician. Sexed Female

W/C FORT KNOX 609F
W/C BET ON RED 481H
W/C ANGEL 7113E

W/C BANKROLL 811D
K-LER DOLLY'S QUEEN 609D
W/C RELENTLESS 32C
W/C MISS ANGEL 2870Z
STF DOMINIQUE R170
MMP KISS THIS 37L
SAC MR MT 73G
SS ME TOO LOG

STF DOMINANCE T171
STF ONYX 451W
GCF MISS CALIENTE

PE	CE	BW	WW	YW	MILK	MCE	MWWT
EPDS	13.4	1.4	64.7	91.2	21.4	5.0	57.7

LOT
44G

3 EMBRYOS

STF ONYX 451W X KWA LAW MAKER 59C

Qualified for USA/CAN. Guaranteed one (1) pregnancy if implanted by a certified technician.

CDI AUTHORITY 77X
KWA LAW MAKER 59C
KWA MS ROCK 14X

NF TRUMP S582
CDI MS CROCKET 88T
KWA RED ROCK 5T
KWA MS BARON 9U
STF DOMINIQUE R170
MMP KISS THIS 37L
SAC MR MT 73G
SS ME TOO LOG

STF DOMINANCE T171
STF ONYX 451W
GCF MISS CALIENTE

PE	CE	BW	WW	YW	MILK	MCE	MWWT
EPDS	10.3	2.9	68.1	105.2	25.0	2.4	59.014.5

LOT
44H

3 EMBRYOS

STF ONYX 451W X RUST PRIMETIME 507G

Qualified for USA/CAN. Guaranteed one (1) pregnancy if implanted by a certified technician. Sexed Female

LOT
44I

3 EMBRYOS

STF ONYX 451W X RUST PRIMETIME 507G

Qualified for USA/CAN. Guaranteed one (1) pregnancy if implanted by a certified technician. Sexed Female

LOT
44J

3 EMBRYOS

STF ONYX 451W X RUST PRIMETIME 507G

Qualified for USA/CAN. Guaranteed one (1) pregnancy if implanted by a certified technician. Sexed Female

W/C NIGHT WATCH 84E
RUST PRIMETIME 507G
HARRELL ANGEL 5870C

CCR ANCHOR 9071B
MISS WERNING KP 8543U
YARDLEY HIGH REGARD W242
W/C MISS ANGEL 2870Z
STF DOMINIQUE R170
MMP KISS THIS 37L
SAC MR MT 73G
SS ME TOO LOG

STF DOMINANCE T171
STF ONYX 451W
GCF MISS CALIENTE

PE	CE	BW	WW	YW	MILK	MCE	MWWT
EPDS	14.5	1.1	63.0	92.0	23.0	10.3	54.4



W/C Bet on Red 481H



KWA LAW MAKER 59C



RUST PRIMETIME 507G



MISS VICTORIA 172G

LOT
45A

3 EMBRYOS

BGS/CD/GRR MISS VICTORIA 172G X WHEATLAND MAN O' WAR 907G

Qualified for USA/CAN. Guaranteed one (1) pregnancy if implanted by a certified technician. Stored at Bow Valley Genetics, SK

LOT
45B

3 EMBRYOS

BGS/CD/GRR MISS VICTORIA 172G X WHEATLAND MAN O' WAR 907G

Qualified for USA/CAN. Guaranteed one (1) pregnancy if implanted by a certified technician. Stored at Bow Valley Genetics, SK

CCLT ALLIANCE 91C	WS PILGRIM H182U
WHEATLAND MAN O' WAR 907G	BROOKS SHINIA 1A
WHEATLAND LADY 519C	YARDLEY LAD A440
	WHEATLAND LADY 321A
WHF LIMITLESS B011	JF MILESTONE 999W
BGS/CD/GRR MISS VICTORIA 172G	WHF SIERRA 245S
HPF VICTORIA A396E	W/C RELENTLESS 32C
	MYERS QUEEN SAZERAC P94

PE	CE	BW	WW	YW	MILK	MCE	MWWT
EPDS	8.6	2.1	71.9	96.5	20.0	3.6	56.2



WHEATLAND MAN O' WAR 907G

172G was purchased from Black Gold/Canadian Donors/Grass Roots Ranch from Friday Night Lights last fall with the intention to really "build" around this impactful elite female. She has worked very well in Embryo Collection so we feel we can offer her genetics to the industry. Her two matings represented here will be impactful moving forward. Tie in with Confidence in this soft made, structurally elegant female.

Homo Polled Hetro Black

LOT
45C

3 EMBRYOS

BGS/CD/GRR MISS VICTORIA 172G X NGDB STRUCTURE 34D

Qualified for USA/CAN. Guaranteed one (1) pregnancy if implanted by a certified technician. Stored at Bow Valley Genetics, SK

NCB COBRA 47Y	LFE VIPER 455U
NGDB STRUCTURE 34D	NCB MISS DREAM 22T
NGDB LOUISE 411 B \ HP-HOP CC-HOB	DRAKE POKER FACE 2X
	KAPPES SADIE M166
WHF LIMITLESS B011	JF MILESTONE 999W
BGS/CD/GRR MISS VICTORIA 172G	WHF SIERRA 245S
HPF VICTORIA A396E	W/C RELENTLESS 32C
	MYERS QUEEN SAZERAC P94

PE	CE	BW	WW	YW	MILK	MCE	MWWT
EPDS	8.6	2.1	71.9	96.5	20.2	3.6	56.2



NGDB STRUCTURE 34D



Payton is likely the best structured black cow at DBD along with awesome neck extension and a beautiful skull. You have the choice of investing in the tried and true combo of 425B X W/C Bankroll wichi are full sibs to the 54000 Annuity Bull going to High Ridge Farms of NC or the exciting combination of 425B and Captain Morgan - I think this cross will be incredible!
Homo Polled Homo Black

LOT
46A

3 EMBRYOS

DOUBLE BAR D PAYTON 425B X W/C BANKROLL 811D

Qualified for USA/CAN. Guaranteed one (1) pregnancy if implanted by a certified technician. Stored at Bow Valley Genetics, SK

LOT
46B

3 EMBRYOS

DOUBLE BAR D PAYTON 425B X W/C BANKROLL 811D

Qualified for USA/CAN. Guaranteed one (1) pregnancy if implanted by a certified technician. Stored at Bow Valley Genetics, SK

W/C LOADED UP 1119Y
W/C BANKROLL 811D
 MISS WERNING KP 8543U

JF AMERICAN PRIDE 0987X
DOUBLE BAR D PAYTON 425B
DOUBLE BAR D PAYTON 658Z

REMINGTON LOCK N LOAD 54U
 AUBREYS BLACK BLAZE III
 WAGR DREAM CATCHER 03R
 MISS WERNING 534R
 MR NLC UPGRADE U8676
 WLE CRUISIN SUSAN T26
 SPRINGCREEK TEDDY 72U
DOUBLE BAR D PAYTON 49T

PE	CE	BW	WW	YW	MILK	MCE	MWWT
EPDS	10.8	1.7	74.5	104.8	21.7	6.5	58.9

LOT
46C

3 EMBRYOS

DOUBLE BAR D PAYTON 425BX SVS CAPTAIN MORGAN 11Z

Qualified for USA/CAN. Guaranteed one (1) pregnancy if implanted by a certified technician. Stored at Bow Valley Genetics, SK

LOT
46D

3 EMBRYOS

DOUBLE BAR D PAYTON 425BX SVS CAPTAIN MORGAN 11Z

Qualified for USA/CAN. Guaranteed one (1) pregnancy if implanted by a certified technician. Stored at Bow Valley Genetics, SK

HARVIE JDF WALLBANGER 111X
SVS CAPTAIN MORGAN 11Z
 SUNNYVALLEY BLK JENNA 88U

JF AMERICAN PRIDE 0987X
DOUBLE BAR D PAYTON 425B
DOUBLE BAR D PAYTON 658Z

SHS ENTICER P1B
 JDF PEPSI 61U
 RLA REDSTREAM 152S
 WLB 32H JENNA 360R
 MR NLC UPGRADE U8676
 WLE CRUISIN SUSAN T26
 SPRINGCREEK TEDDY 72U
DOUBLE BAR D PAYTON 49T

PE	CE	BW	WW	YW	MILK	MCE	MWWT
EPDS	9.3	3.7	78.3	119.7	23.3	4.9	119.7



W/C BANKROLL 811D



SVS CAPTAIN MORGAN 11Z



BRETT 454B

LOT
47A

3 EMBRYOS

DOUBLE BAR D BRETT 454B X WHEATLAND MAN O' WAR 907G

LOT
47B

3 EMBRYOS

DOUBLE BAR D BRETT 454B X WHEATLAND MAN O' WAR 907G

CCLT ALLIANCE 91C
WHEATLAND MAN O' WAR 907G
WHEATLAND LADY 519C

JF AMERICAN PRIDE 0987X
DOUBLE BAR D BRETT 454B
DOUBLE BAR D BRETT 161U

WS PILGRIM H182U
BROOKS SHINIA 1A
YARDLEY LAD A440
WHEATLAND LADY 321A
MR NLC UPGRADE U8676
WLE CRUISIN SUSAN T26
BISS TOBY 818P
DOUBLE BAR D BLACKBIRD 97

PE	CE	BW	WW	YW	MILK	MCE	MWWT
EPDS	10.7	2.3	69.0	96.0	18.1	5.6	52.6

Purchased from Griswolds in the fall of 2017 for \$65000, Exactly 761E has been paraded up and down the road with excellent results. She was third overall Percentage heifer at OYE (Oklahoma) in 2018 and Reserve Overall percentage heifer in 2019. Also, in Denver 2019 she was Reserve Division percentage Simmental. Not only does 761E dazzle in the show but produces very well as well with her Bankroll daughter, 695G, being an impressive individual. 761E had a full sister on the show road being Supreme Champion at Tulsa State fair in Oct of 2020. SO with that being said, consistency runs deep. 761E has much to offer for a percentage program as she will add hair, phenotype, all the while maintaining an excellent structure. These resulting embryos from Exactly 761E and Wheatland Man O War will be ¾ blood Simmental and have endless potential for the show enthusiast and rancher alike. Also, the Structure embryos should be very valuable as last year the Structure progeny were highly sought after. **Qualified for Canada. Guaranteed one (1) pregnancy if implanted by a certified technician. AUS/USA/CAN qualified**



NGDB STRUCTURE 34D

Homo Polled Homo Black

Brett 454B, American Pride dam, is co owned with Outlaw Cattle CO. 454B worked very well with W/C Bankroll, with 536F being the most notable, but many others are doing well here at DBD or at their various owners. This new Man O War combination is extremely exciting as we await them to hit the ground Jan 2022. Brett 454B is very long bodied with great shape, front to back, with a very sweet front third.

Qualified for Canada. Guaranteed one (1) pregnancy if implanted by a certified technician. AUS/USA/CAN qualified



WHEATLAND MAN O' WAR 907G

LOT
48A

3 EMBRYOS

BBRS EXACTLY 761E X NGDB STRUCTURE 34D

LOT
48B

3 EMBRYOS

BBRS EXACTLY 761E X NGDB STRUCTURE 34D

LOT
48C

3 EMBRYOS

BBRS EXACTLY 761E X WHEATLAND MAN O' WAR 907G

CCLT ALLIANCE 91C
WHEATLAND MAN O' WAR 907G
WHEATLAND LADY 519C

MR HOC BROKER
BBRS EXACTLY 761E
BBR ZENA 298Z

WS PILGRIM H182U
BROOKS SHINIA 1A
YARDLEY LAD A440
WHEATLAND LADY 321A
SVF STEEL FORCE S701
JM BF H25
BBBN X 483X
AN X MA 509

PE	CE	BW	WW	YW	MILK	MCE	MWWT
EPDS	8.1	2.1	69.4	94.5	20.9	2.9	55.5



EXACTLY 761E



CHERRY BOMB 513C

LOT
49A

3 EMBRYOS

IRCC CHERRY BOMB 513C X KWA LAW MAKER 59C

LOT
49B

3 EMBRYOS

IRCC CHERRY BOMB 513C X KWA LAW MAKER 59C

CDI AUTHORITY 77X
KWA LAW MAKER 59C
KWA MS ROCK 14X

MR HOC BROKER
IRCC CHERRY BOMB 513C
INDIAN RIVER SPIRIT

NF TRUMP S582
CDI MS CROCKET 88T
KWA RED ROCK 5T
KWA MS BARON 9U
SVF STEEL FORCE S701
JM BF H25
FVFR RED SKY 40L
INDIAN RIVER PROTEGE

PE	CE	BW	WW	YW	MILK	MCE	MWWT
EPDS	5.3	3.9	75.1	109.6	27.4	2.2	64.9



Cherry Bomb 513C - Son



KWA LAW MAKER 59C

Cherry Bomb continues to work very well no matter the mating. Her progeny last year at Share 2020 and this spring at Best 2021 were very well received. These Law Maker progeny will be top shelf cattle for the new owner **Qualified for USA/CAN Guaranteed one (1) pregnancy if implanted by a certified technician.**



RLD
436E



LER
43H



WS
E202

LOT 50A 3 EMBRYOS FROM A SPLIT FLUSH

DOUBLE BAR D PEPSI 436E X WHEATLAND NEXT CENTURY 43H

WHEATLAND RIVAL 8125F
WHEATLAND NEXT CENTURY 43H
WHEATLAND LADY 123Y

KWA LAW MAKER 59C
DOUBLE BAR D PEPSI 436E
SWAN LAKE PEPSI 97A

CCLT ALLIANCE 91C
WHEATLAND LADY 5213C
STF RUSSOM RE86
STF SLY MOVES P260
CDI AUTHORITY 77X
KWA MS ROCK 14X
REMINGTON LOCK N LOAD 54U
MRL MISS 390X

PE	CE	BW	WW	YW	MILK	MCE	MWWT
EPDS	8.4	2.7	80.1	113.2	24.3	3.1	64.3

LOT 50B 3 EMBRYOS FROM A SPLIT FLUSH

DOUBLE BAR D PEPSI 436E X WS PROCLAMATION E202

CCR COWBOY CUT 5048Z
WS PROCLAMATION E202
WS MISS SUGAR C4

KWA LAW MAKER 59C
DOUBLE BAR D PEPSI 436E
SWAN LAKE PEPSI 97A

TRIPLE C SINGLETARY S3H
CCR MS 4045 TIME 7322T
CLRS GRADE-A 875 A
WS ANISE A71
CDI AUTHORITY 77X
KWA MS ROCK 14X
REMINGTON LOCK N LOAD 54U
MRL MISS 390X

PE	CE	BW	WW	YW	MILK	MCE	MWWT
EPDS	9.5	2.1	92.1	138.9	32.5	6.1	78.5

Here is a chance to buy some embryos off a split flush of Double Bar D Pepsi 436E to Wheatland Next Century and WS Proclamation E202. Pepsi was purchased through the 2018 female sale for \$30000. 436E and proclamation are already a proven cross, with her bull calf selling through the 2021 bull sale, sold to Bar 9 Simmental's for \$25,000 and her heifer calf through 2020 female sale sold to Horner cattle co. and has joined their donor program. Wheatland Next Century sold in Wheatlands 2021 bull sale for \$242,000 . Either way you can't go wrong!

Qualified for Canada. Guaranteed one (1) pregnancy if implanted by a certified technician. Stored at Bow Valley Genetics.



Ada 177C is a beautiful, structurally and excellent uddered Homozygous polled female that we have intentionally bred to build around. She is very attractive with extra neck extension and very good rib shape. She was pictured as a first calf female so now you can imagine her with a whole lot more mass. Her Et sons from Bellagio in 2019 were very well received and sold to Forden Fairview Farms, Sk, Gamache Simmentals, Ab and Gra-Tan Ranch, Ab. Her guaranteed Homo Polled embryos from SVS Gambler, I have the confidence will be the right kind with two exceptional females backing them, Ada 177C and Alliance Ms Dakota Dream. Ada's mating to DBD 153D is interesting as 153D is a power horned Fleckvieh bull that we sold to Mexico in 2018 for \$50000. I am really excited to see their mating!
Homo Polled Full Fleckvieh

LOT 51A **3 EMBRYOS**
 DOUBLE BAR D ADA 177C X SVS GAMBLER 33H

LOT 51B **3 EMBRYOS**
 DOUBLE BAR D ADA 177C X SVS GAMBLER 33H

LOT 51C **3 EMBRYOS**
 DOUBLE BAR D ADA 177C X SVS GAMBLER 33H

FGAF GUERRERO 810Y SVS GAMBLER 33H ALLIANCE MS DAKOTA DREAM \ HP-HOP	FGAF SELDOM 835L NOSSATERRA REAL WISH 69U CHAMPS BRAVO ALLIANCE SPECIAL'S DAKOTA \ HP-HEP HEMR SAMURAI 7S DORA LEE ELEXIS DOUBLE BAR D ADONIS 603N GRINALTA'S CLASS ACT 11K
ANCHOR D IMAX 250Y DOUBLE BAR D ADA 177C DOUBLE BAR D ADONIS 535S	

PE	CE	BW	WW	YW	MILK	MCE	MWWT
EPDS	9.9	2.1	57.0	77.5	39.0	3.6	67.5

USA/CAN qualified. Guaranteed one (1) pregnancy if implanted by a certified technician. Stored at Bow Valley Genetics. Resulting progeny will be Homo Polled



SVS Gambler 33H

LOT 51D **3 EMBRYOS**
 DOUBLE BAR D ADA 177C X DOUBLE BAR D CHANDLER 153D

LOT 51E **3 EMBRYOS**
 DOUBLE BAR D ADA 177C X DOUBLE BAR D CHANDLER 153D

DOUBLE BAR D CHANDLER 143 DOUBLE BAR D CHANDLER 153D DOUBLE BAR D BARBL 164A	DOUBLE BAR D CHESAPEAKE DOUBLE BAR D KLAUDIA 80T RV NICKELBACK 6U DOUBLE BAR BARBL 403U HEMR SAMURAI 7S DORA LEE ELEXIS DOUBLE BAR D ADONIS 603N GRINALTA'S CLASS ACT 11K
ANCHOR D IMAX 250Y DOUBLE BAR D ADA 177C DOUBLE BAR D ADONIS 535S	

PE	CE	BW	WW	YW	MILK	MCE	MWWT
EPDS	4.7	4.7	66.4	97.9	37.8	0.4	71.0

CAN qualified. Guaranteed one (1) pregnancy if implanted by a certified technician. Stored at Bow Valley Genetics.



Double Bar D Chandler 153D

CONSIGNED BY: Canadian Donors

When the Dimler family asked us to be a part of the sale we instantly said yes and we were committed to sell our very best and we truly know that 518C is among of the very elite donors we own. This Polled Fleckvieh female is awesome in so many ways and wraps it all together from stacked pedigree with famous cow families represented to a phenotype that is awesome in a polled package. Her dam, Lady A is one of the special breeding pieces in the fleckvieh world and is well over \$100,000 in progeny sales and her bright years are still ahead. 518C raised a \$16,000 son this spring and has an awesome Freedom son at side in 2021 that is an incredible individual. We have the utmost confidence in 518C and the matings to the homo polled Shamrock and \$165,000 Reputation are sure to provide a great ROI.

We have 4 recips carrying 518C x Shamrock embryos this fall and they are all selling in this sale, not to devalue our other pregnant recips selling later but we are confident these are the very best recips in the entire pen and they are all registered Simmentals and have no business carrying embryos. 5238C is an ET female herself and one of the most beautiful cows at our place and is actually the cover girl female on one of our annual female sales - she is a Bootlegger x U147 female and in the prime of her life and will be tough to see her go. 9508G is also an ET female herself that is coming 3-years-old from the respected Rust program that is incredible pedigree as she is a actually a direct daughter of the famous 5870C, the dam of PrimeTime that walks at DBD. We have been fortunate to acquire some outstanding females at Rust over the years and these 2 are representations that. 52F wasn't actually in the recip pen and was slated to be AI to Reddington but she had a natural heat the day prior to our recip pen so we held off AI'ing her and decided to put a fresh embryo in instead. She was acquired out of FNL with our friends in Ontario, Garth & Sue Hogg and she is a feature young cow that needs to go into production herself and not see embryos again. Lastly, 111B is a top red cow that is powerful in her type and has been used for a recip but can surely go into production and sells with papers, jsut like the other 3 above. We do guarantee a live calf on all recips selling and that is the same guarantee that we have done in past Canadian Donors Pregnant Recipient Sales.

After seeing progeny from the \$165,000 Reputation this summer, we did our last flush to him this fall and we received 4 embryos and they are offered here with a guarantee of 2 pregnancies if implanted by an accredited vet. We are confident in the future of Reputation and feel his cross with 518C will be a valuable pedigree with endless marketability.



NGDB Lady Grace 518C
Donor Dam of Lots 52A - 52E



ROD Shamrock 10G
Sire of Lots 52A - 52D



SBV Reputation 707F
Sire of Lots 52E

LOT
52A

PREGNANT RECIPIENT

NGDB LADY GRACE 518C X ROD SHAMROCK 10G

RECIP: SIBBALD/RUST MISS 5238C DUE JANUARY 3, 2022 BOHRSON'S, OLDS, AB

LOT
52B

PREGNANT RECIPIENT

NGDB LADY GRACE 518C X ROD SHAMROCK 10G

RECIP: RUST MS ANGEL 9508G DUE JANUARY 3, 2022 BOHRSON'S, OLDS, AB

LOT
52C

PREGNANT RECIPIENT

NGDB LADY GRACE 518C X ROD SHAMROCK 10G

RECIP: DEEG MS FLARE 52F DUE JANUARY 3, 2022 BOHRSON'S, OLDS, AB

LOT
52D

PREGNANT RECIPIENT

NGDB LADY GRACE 518C X ROD SHAMROCK 10G

RECIP: DEEG MS 111B DUE JANUARY 3, 2022 BOHRSON'S, OLDS, AB

CHERRY CREEK GLITZ 4D
SBV REPUTATION 707F
SUNNY VALLEY RHEA 54C

CHAMPS BRAVO
NGDB LADY GRACE 518C
SUNNY VALLEY LADY A 51A

FGAF MAGNUM 901Z
BEE GLITTER 329A
CHAMPS BRAVO
SUNNY VALLEY RHEA 61X
CHAMPS ROMANO
VIRGINIA POLL BARBI SUE
ANCHOR D IMAX 250Y
SUNNY VALLEY HAYLEY 4X

PE	CE	BW	WW	YW	MILK	MCE	MWWT
EPDS	2.8	5.7	75.7	108.9	30.8	1.3	68.6

LOT
52E

4 EMBRYOS

NGDB LADY GRACE 518C X SBV REPUTATION 707F

RECIP: DEEG MS FLARE 52F DUE JANUARY 3, 2022 BOHRSON'S, OLDS, AB
USA/AUS Qualified. Guaranteed 2 pregnancies if implanted by an accredited vet. Stored at Davis Rairdan Internation.

FSMB POL EDDY 3E \ HP-HEP
ROD SHAMROCK 10G
BMS POL BRENDA 8C

CHAMPS BRAVO
NGDB LADY GRACE 518C
SUNNY VALLEY LADY A 51A

FGAF FRENCH ATTACK 010C
FSMB MISS BRAVO 8A
ROLLING ACRES TORQUE
BBBG MISS NEUMAN 6W
CHAMPS ROMANO
VIRGINIA POLL BARBI SUE
ANCHOR D IMAX 250Y
SUNNY VALLEY HAYLEY 4X

PE	CE	BW	WW	YW	MILK	MCE	MWWT
EPDS	1.0	5.8	80.0	110.9	30.3	0.3	70.3



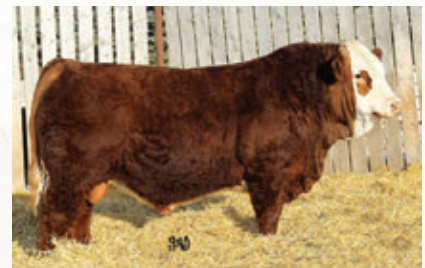
SUNNY VALLEY DEVINE 609D - DAM OF DONOR



NGDB 7G
\$25,000.00 MATERNAL BROTHER TO 518C
SOLD TO Y COULEE



NGDB 16H
\$18,500.00 MATERNAL BROTHER TO 518C
SOLD TO KSL SIMMENTALS



NGDB 27H
\$15,000.00 MATERNAL BROTHER TO 518C
SOLD TO PACKETT BROS



NGDB LADY DEVINE 609D
\$30,000.00 MATERNAL SISTER TO 518C
SOLD TO STARWEST



SVS 67H
\$16,000.00 SON OF 518C
SOLD TO R&J FARMS



NGDB 79F
\$16,500.00 MATERNAL BROTHER TO 518C
SOLD TO JOHNSON RANCHING



DONNA 123C

Donna 123C is an exceptional, robust powerful built cow. She is very tanky yet possesses good eye appeal. She is polled and her guaranteed polled progeny from Sensation FF 9090D will be highly marketable. Her Adonis 603N sired dam, 535S, produced till she was 13 years of age while maintaining a very sound udder.

Polled Full Fleckvieh

LOT
53A

3 EMBRYOS

DOUBLE BAR D DONNA 123C X FGAF ELECTRIC AVENUE 140E

FGAF FRENCH ATTACK 010C
FGAF ELECTRIC AVENUE 140E
GIBBONS DORALEE

ANCHOR D IMAX 250YB
DOUBLE BAR D DONNA 123C
DOUBLE BAR D ADONIS 535S

SIBELLE DIRTY HARRY 25Z
VIRGINIAS JANE WEST
BAR 5 P SA EVOLUTION 418S
DORA LEE'S DUCHESS FF152T
HEMR SAMURAI 7S
DORA LEE ELEXIS
DOUBLE BAR D ADONIS 603N
GRINALTA'S CLASS ACT 11K

PE	CE	BW	WW	YW	MILK	MCE	MWWT
EPDS	2.9	5.7	73.6	103.8	35.8	-1.3	72.6

AUS/USA/CAN qualified. Guaranteed one (1) pregnancy if implanted by a certified technician. Stored at Bow Valley Genetics.

LOT
53B

3 EMBRYOS

DOUBLE BAR D DONNA 123C X GRINALTA'S HP SENSATION FF909D

BIG HILLS CANE 62B
GRINALTA'S HP SENSATION FF909D
DOUBLE BAR D ADONIS 535S

ANCHOR D IMAX 250YB
DOUBLE BAR D DONNA 123C
DOUBLE BAR D ADONIS 535S

MACKENZIE'S CANE 122Y
EAGLE-RIDGE ZABIA
GRINALTA'S HP KING 126S
GRINALTA'S BERTA PFF109T
HEMR SAMURAI 7S
DORA LEE ELEXIS
DOUBLE BAR D ADONIS 603N
GRINALTA'S CLASS ACT 11K

PE	CE	BW	WW	YW	MILK	MCE	MWWT
EPDS	5.5	4.7	64.1	88.5	38.9	2.0	70.9

AUS/USA/CAN qualified. Guaranteed one (1) pregnancy if implanted by a certified technician. Stored at Bow Valley Genetics.



FGAF Electric Avenue 140E



Grinalta's HP Sensation FF909D



TWELVE (12) PACKAGES OF 10 UNITS OF SEMEN

LOT
54

WHEATLAND *Man O' War* **907G**

• PURE BRED • HOMO POLLED • LER 907G • BPG1304040 • JAN. 25, 2019

WS PILGRIM H182U
CCLT ALLIANCE 91C
BROOKS SHINIA 1A

YARDLEY LAD A440
WHEATLAND LADY 519C
WHEATLAND LADY 321A

CNS DREAM ON L186
WS MARLA 276M
BB BARACK 1017T
BROOKS RED HOT Y17
STCC LONG HAUL 033X
Y1 MISS YARDLEY W105
WHEATLAND HIGH OCTANE 169Y
WHEATLAND LADY 13X

CE	BW	WW	YW	MILK	MCE	MWWT
9.0	2.5	76.5	99.3	22.6	2.1	60.9

Homo Polled Homo Black

We are very excited to present wheatland Man O' War 907G as an exciting new sire as he was the most talked about bull to sell in the spring of 2020. Looking forward to his influence in our program as we feel he is and will be a perfect compliment to our existing genetics. His sons and daughters are here and are looking great!

Don't hesitate to be in early on this complete and impressive breeding bull. His daughters are headlining this sale and sons will be highly sought after this spring.

Semen stored at Alta Genetics, qualified for AUS/NZL/MEX/USA/CAN



W/C BANKROLL 811D SEMEN

SIX (6) PACKAGES OF 10 UNITS
LOT
OF SEMEN

55

- BPTG1217569
- RLD 811D
- JANUARY 30, 2016

CE	BW	WW	YW
13.2	1.6	79.5	113.3
MILK	MCE	MWWT	
27.8	8.0	67.6	

Qualified for CAN.



RLD 477F

REMINGTON LOCK N LOAD 54U
W/C LOADED UP 1119Y
AUBREYS BLACK BLAZE III

REMINGTON ON TARGET 2S
BAR 15 MISS KNIGHT78E-51G
3C MACHO M450 BZ
BLAZE IV 1P

WAGR DREAM CATCHER 03R
MISS WERNING KP 8543U
MISS WERNING 534R

CNS DREAM ON L186
MELODY M668 BZ
R&R WAREHOUSE K609
MISS WERNING 934J

Homo Polled Hetro Black

Bankroll in person will stop you in your tracks. Muscular, athletic, well built, excellent feet with a look and presence that is second to none. His calves have exceeded extremely high expectations. Low birth weights, high growth and sound. The sons are powerful and rugged yet the females are angular and have an exceptional maternal look. He has already amassed an impressive list of high sellers and winners and his daughters are now in production and are looking great! Prime examples are 477F and 536F.



RUBYS TURNPIKE 771E SEMEN

SIX (6) PACKAGES OF 10 UNITS
LOT
OF SEMEN

56

- BPRS1281593
- FGN 771E
- JANUARY 31, 2017

CE	BW	WW	YW
9.4	3.5	96.0	160.7
MILK	MCE	MWWT	
22.8	4.2	70.8	

Qualified for CAN.

GW-WBF SUBSTANCE 820Y
WBF SIGNIFICANT B132
WBF HEBE X376

GW PREMIUM BEEF 021TS
GW MISS MATERNAL 558P
WBF TITIAN U109
WBF HEBE U896

OVAL F RINGLEADER R579
RUBYS MISS CLEO 240Z
RUBYS MISS CLEO 964W

HC HUMMER 12M
OVAL F NIKKI N431
HTP SVF IN DEW TIME
DOUBLE R MISS CLEO L27

Homo Polled Homo Black 7/8 Simmental

Turnpike was the most talked about bull at the 2018 National Western and if you saw him stomping the dirt in the Pepsi Centre, it was easy to understand why. A rare blend of power and mass with undeniable presence. He is big footed and has excellent testicles. Equally intriguing is Turnpike's unique and outcross pedigree and well above average EPD spread. We partnered with Werning Cattle Co. to purchase Turnpike as the high selling lot in Rubys Bull Sale. Now with Turnpike's third calf crop on the ground we couldn't be more excited and pleased with his influence. Turnpike's progeny consistently rise to the top on both sides of the border.

KWA LAW MAKER 59C SEMEN

TEN (10) PACKAGES OF 10
LOT UNITS OF SEMEN
57

- PTG1152682
- KWA 59C
- JANUARY 17, 2015

CE	BW	WW	YW
6.9	3.7	85.8	140.8
MILK	MCE	MWWT	
31.2	1.2	74.1	

Qualified for CAN/USA/AUS.



NF TRUMP S582
CDI AUTHORITY 77X
CDI MS CROCKET 88T

Homo Polled

A rare opportunity to acquire Law Maker semen. His bulls continue to be very well received as being built right with having just enough ruggedness on a balanced set of EPDs. The daughters are angular with an abundance of middle with excellent feet and legs. We have many Law Maker daughters in production in the herd and they are developing into front pasture cows and already are producing like that. Half semen interest is owned with Dr Everett More, Virden MB.

NF DR. ATKINS P35F
FF MS EXALTING E582
LBR CROCKET R81
CDI MISS SHEAR FORCE 4N

KWA RED ROCK 5T
KWA MS ROCK 14X
KWA MS BARON 9U

DAY RED PEPPER DOC 984R
KWA MS ROCK 7P
RED BARON HR P101
KWA MS 121S

MR SR 71 RIGHT NOW E1538 SEMEN

SEVEN (7) PACKAGES OF 10
LOT UNITS OF SEMEN
58

- BPRS1323080
- FGN 1538E
- FEBRUARY 20, 2017

CE	BW	WW	YW
16.7	-2.0	84.6	137.6
MILK	MCE	MWWT	
21.1	10.2	63.4	

Qualified for CAN.



GW-WBF SUBSTANCE 820Y
HOOK'S BOZEMAN 8B
HOOK'S WILL POWER 24W

GW PREMIUM BEEF 021TS
GW MISS MATERNAL 558P
TRIPLE C INVASION R47K
HOOKS SHIMMER 37S

HOOK'S YELLOWSTONE 97Y
MISS SR C1538
MISS FR A309

HOOKS TAURUS 24T
HOOKS SHEYENNE 77S
WS INTERSTATE X57
MISS FR S669

3/4 Simmental

Right Now is gaining momentum at a very steep rate of ascent. He is a very good blend of calving ease and growth on an ideal structure. His calves are born unassisted and are vigorous. We are fortunate to have the Canadian Rights to this curve bending bull.



RUST PRIMETIME 507G SEMEN

TEN (10) PACKAGES OF 10
LOT UNITS OF SEMEN
59

- BPTRS1314791
- RLD 507G
- FEBRUARY 24, 2019

CE	BW	WW	YW
17.1	-2.3	75.6	114.2
MILK	MCE	MWWT	
27.1	6.7	64.9	

Qualified for CAN/USA/MEX/AUS.
Stored at Alta Genetics

CCR ANCHOR 9071B
W/C NIGHT WATCH 84E
MISS WERNING KP 8543U

CCR COWBOY CUT 5048Z
CCR MS BARB 2120Z
WAGR DREAM CATCHER 03R
MISS WERNING 534R

YARDLEY HIGH REGARD W242
HARRELL ANGEL 5870C
W/C MISS ANGEL 2870Z

YARDLEY IMPRESSIVE T371
MISS YARDLEY T68
REMINGTON LOCK N LOAD 54U
MISS WERNING KP 8543U

Homo Polled Homo Black 7/8 Simmental

Once we laid eyes on Primetime we really wanted to own him, the lead off bull at Rust Mountain View Sale 2020. He was admired by many as their pick of the bull calves at Denver 2020. Primetime is very clean fronted but yet explodes into a wide topped and thick butted bull all tied together with a stellar set of EPDs, especially calving ease. He is strong footed and very athletic in his movement on a near flawless phenotype and backed by an incredible pedigree going back to 8543. His first calf crop has met all of our expectations as they are born easy with great vigor and develop to be correct and attractive with excellent capacity.



SVS CAPTAIN MORGAN 11Z SEMEN

FIVE (5) PACKAGES OF 10 UNITS
LOT OF SEMEN
60

- BPTG766965
- TLAS 11Z
- JANUARY 3, 2012

CE	BW	WW	YW
7.2	5.5	89.4	141.9
MILK	MCE	MWWT	
24.6	3.2	69.3	

Homo Polled Hetro Black
Qualified for CAN/USA/AUS/BRA
Stored at Alta Genetics

SHS ENTICER P1B
HARVIE JDF WALLBANGER 111X
JDF PEPSI 61U

TCF/RCC TEMPTATION GJ640
ROCKY HILLS JO
REMINGTON ON TARGET 2S
JDF MATTIE 61R

RLA REDSTREAM 152S
SUNNYVALLEY BLK JENNA 88U
WLB 32H JENNA 360R

TWIN CHIEF MIDAS 248M
CONRAY ARLA 152K
KAPPES ROCK SOLID H32
IPU MS BLACK JANA 113L

Without question Captain Morgan is one of, or the most influential bulls in the Simmental Industry in the last 8 years. His sons are still highly sought after and his daughter, now in production for many years, are producing the next generation off lead off red and black Simmental genetics.

ANCHOR D MOTOWN 865E SEMEN

SEVEN (7) PACKAGES OF 10
LOT UNITS OF SEMEN

61

- T1248299
- ZDS 865E
- DECEMBER 25, 2017

CE	BW	WW	YW
4.8	5.1	83.1	129.3
MILK	MCE	MWWT	
30.2	0.5	71.8	

Qualified for CAN/USA.
Full Fleckvieh



VIRGINIA WALKER 97W
SIBELLE GOLDA
CHAMPS ROMANO
VIRGINIA'S MS WEST PATTY

R-FIVE MALTESE
FGAF PRECIOUS THING 402T
FGAF SHANTI 121P

GIDSCO APPOLLO 3F
FGAF SHE'S ALL THAT 724K
SHAWACRES JAHARI 50L
FGAF LEGEN'S CHARM 743K

SIBELLE DIRTY HARRY 25Z
FGAF FRENCH ATTACK 010C
VIRGINIAS JANE WEST

We are just weaning Motown's second calf crop this fall and they are arguably the best sire group, so we are very pleased and excited. Motown is very moderate on a correct structure with an excellent foot but his progeny tend to out perform himself. His heifers are feminine and fancy with lots of rib and his bull calves are stout made, free moving with good structure. Check out his progeny in this sale.

MFI JEREMIAH 9022 SEMEN

EIGHT (8) PACKAGES OF 10
LOT UNITS OF SEMEN

62

- 721721
- MFI 22W
- MARCH 28, 2009

CE	BW	WW	YW
0.5	7.0	71.2	95.5
MILK	MCE	MWWT	
40.4	-4.7	76.0	

Qualified for CAN/USA/ARG.
Full Fleckvieh



SALAMON
MFL ZAILA 8Z
RICKARDSTOWN JUMBO
GREAT GUNS RACHEL 29X

BEL WESTERN UNION 5Z
MFI PETRA 2093
MFL ZAILA 8Z

RICKARDSTOWN JUMBO
BEL HELGA 9TH
SOLWAY ADONIS
MFL PETRA 95P



RLD 147A - Daughter

MFI WHISTLER 47L
GIBBONS JEREMIAH
RHY EVIE 62C

Don't really know where to start with Juggernaut so I will keep it brief as his continued influence can do all the talking. He sires excellent bulls and females with his daughters being the backbone of our fleck cows here at Double Bar D.



SVS GAMBLER 33H SEMEN

TEN (10) PACKAGES OF 10
LOT UNITS OF SEMEN
63

- P1319854
- SVS 33H
- JANUARY 18, 2020

CE	BW	WW	YW
15.4	-1.2	55.1	75.3
MILK	MCE	MWWT	
36.4	8.7	64.0	

Qualified expected for CAN/USA
Stored at Bow Valley Genetics



Ms Dakota Dream - Dam

FGAF SELDOM 835L
FGAF GUERRERO 810Y
NOSSATERRA REAL WISH 69U

OVERHALL HIVY
RAJ MS ARNOLD 21F
ANCHOR "T" LEGEND 7H
GIBBY'S RORY 25R

CHAMPS BRAVO
ALLIANCE MS DAKOTA DREAM \ HP-HOP
ALLIANCE SPECIAL'S DAKOTA \ HP-HEP

CHAMPS ROMANO
VIRGINIA POLL BARBI SUE
SUNNY VALLEY DAKOTA 9Z
BLI SPECIAL 207Z \ HP-HEP

Homo Polled Full fleck

We are very excited to introduce Gambler to our program and share him with the industry. We are extremely impressed how he has continued to develop while breeding a large group of fleck heifers this spring and also breeding a group of our 'June Calving' cows this August and September. He is a very well built, thick and robust bull whose future progeny really excite us.



VIRGINIA RAMSAY 739H SEMEN

EIGHT (8) PACKAGES OF 10
LOT UNITS OF SEMEN
64

- P1304601
- VIRS 739H
- FEBRUARY 4, 2020

CE	BW	WW	YW
2.1	5.3	73.3	107.5
MILK	MCE	MWWT	
41.4	0.7	78.1	

Qualified expected for CAN/USA
Stored at Bow Valley Genetics
Polled Full Fleckvieh

SIBELLE SPARTACUS 8A
SIBELLE POL SYNERGY 18F
SIBELLE POL CROCUS 20D \ HP-HOP

VIRGINIA WALKER 97W
BBBG FRANCESCA 2S
ANCHOR D IMAX 250Y
SIBELLE POL MOLLY 7B

DOUBLE BAR D NOTORIOUS
VIRGINIA EVERLY 739E
VIRGINIA MS JORJA 9Y

RV NICKELBACK 6U
ANCHOR "T" AMANDA 63L
VIRGINIA MICHELANGELO 27W
VIRGINIA'S MS PEACHY

Once I laid eyes on Ramsay at Virginia Ranch in early February I just couldn't get him off my mind. A real power polled bull that has amazing hair and rib dimension with an excellent long-level hip. Can't wait to see his calves hit the ground!

SERVICE SIRES



Rust Primetime 507G



Wheatland Man O' War 907G



SVS Gambler 33H



W/C Bankroll 811D



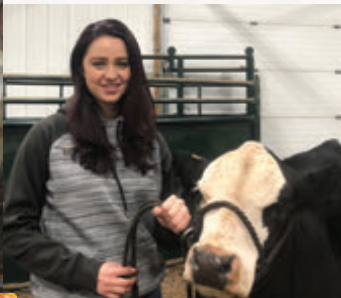
W/C Relentless 007G



RUST Rest Easy 516G

**PLEASE JOIN US FOR OUR BEST OF BOTH WORLDS BULL SALE
TUESDAY, MARCH 1, 2022**





Congratulations to
LONGVIEW CATTLE COMPANY



LOT 6 LONGVIEW PEPSI 28J
RESERVE INTERMEDIATE CHAMPION AT LLOYDMINSTER STOCKADE ROUNDUP 2021



DOUBLE BAR D MORGAN (BANKROLL DAUGHTER) WITH HER MAN O' WAR BULL CALF
GRAND CHAMPION AT SWIFT CURRENT YOUNG RANCHMAN
SECOND IN CLASS LLOYDMINSTER STOCKADE ROUNDUP

Terms & Conditions

TERMS: The terms of the sale are cash or cheque, payable at par at the sale location. The right of property shall not pass until after settlement has been made; no invoicing on buyers in attendance unless previous arrangements have been made. Every animal sells to the highest bidder and in cases of disputes, the auctioneer's decision will be final. Announcements from the auction block will take precedence over the printed matter in the catalogue. Current exchange rates will be announced sale day. All monies are in Canadian funds. Double Bar D reserves the right to flush any of the females in the offering at the seller's expense and buyer's convenience.

CERTIFICATE OF REGISTRATION: Each animal will carry papers issued by the Canadian Simmental Association. A certificate of registry duly transferred will be furnished to the buyer for each animal after payment has been made.

PEDIGREE ESTIMATES:

Pedigree Estimates (PE) are created on the projected mating of the animal's sire and dam based on averages of the two, creating estimated values that do not hold the same accuracy of actual EPDs issued from the association and should be used as such.

HEALTH: All animals in the sale have met all necessary health requirements.

GUARANTEE: Each animal becomes the purchaser's risk immediately after the animal is sold. All animals in this sale will be sold under the terms and guarantees set forth by the Canadian Simmental Association with regards to health, freedom from defects and from both reproductive and specific genetic unsoundness.

PREGNANCY INFORMATION: All serviceable age females have been pregnancy examined by an accredited veterinarian, giving an estimated length of gestation. This estimated gestation period shall be used only as a guideline to calving and is not a guarantee of actual service.

LIABILITIES: All persons attend the sale at their own risk. The seller, facility owner and sale manager assume no liability, legal or otherwise, for any accidents that occur. It is understood that T Bar C Cattle Co. (2013) Ltd. is acting only as a medium between buyer and seller and is not responsible for any failure on the part of either party to live up to his obligations. Neither does T Bar C Cattle Co. (2013) Ltd. assume any financial obligations to collect or enforce collection of any monies between parties and any legal action that may, in exceptional cases, be taken must be between the buyer and the seller. T Bar C Cattle Co. (2013) Ltd. assumes no responsibility for any credit extended by the seller to the buyer. The buyer must look to the seller for fulfillment of all guarantees and representations made hereunder.

DELIVERY: Assistance will be given in getting your purchases home. Each animal becomes the risk of the purchaser as soon as sold.

PHONE, MAIL, WIRE BIDS: Bidders unable to attend the sale may phone, wire or mail their bids and instructions to the sale manager, auctioneer or special representatives. Bids must be received in sufficient time prior to the sale.

INSURANCE : We strongly recommend that insurance is purchased for full value.

ERRORS: All announcements at sale time, written or oral, supersede any written material in the catalogue.

**Return Undeliverable
Canadian Addresses To:
T Bar C Cattle Co. Ltd.
Box 2330
Warman, Saskatchewan S0K 4S0**



Created By
Today's
Publishing